

14687 Plummer Street

PANORAMA CITY, CA



PRICE:

\$970,000

INVESTMENT HIGHLIGHTS:

- Great Panorama City Location
- Development/Owner User Possibility
- Large Lot Approximately 22,564 SF
- 3 Bed + 2 Bath Single-Family Residence
- Residential Financing Available
- Zoning: LARA
- Lack of Inventory on the Market
- High Demand Rental Location



KW COMMERCIAL

12001 VENTURA PLACE
SUITE #404
STUDIO CITY, CA 91604

PRESENTED BY:

MICHAEL PESCI

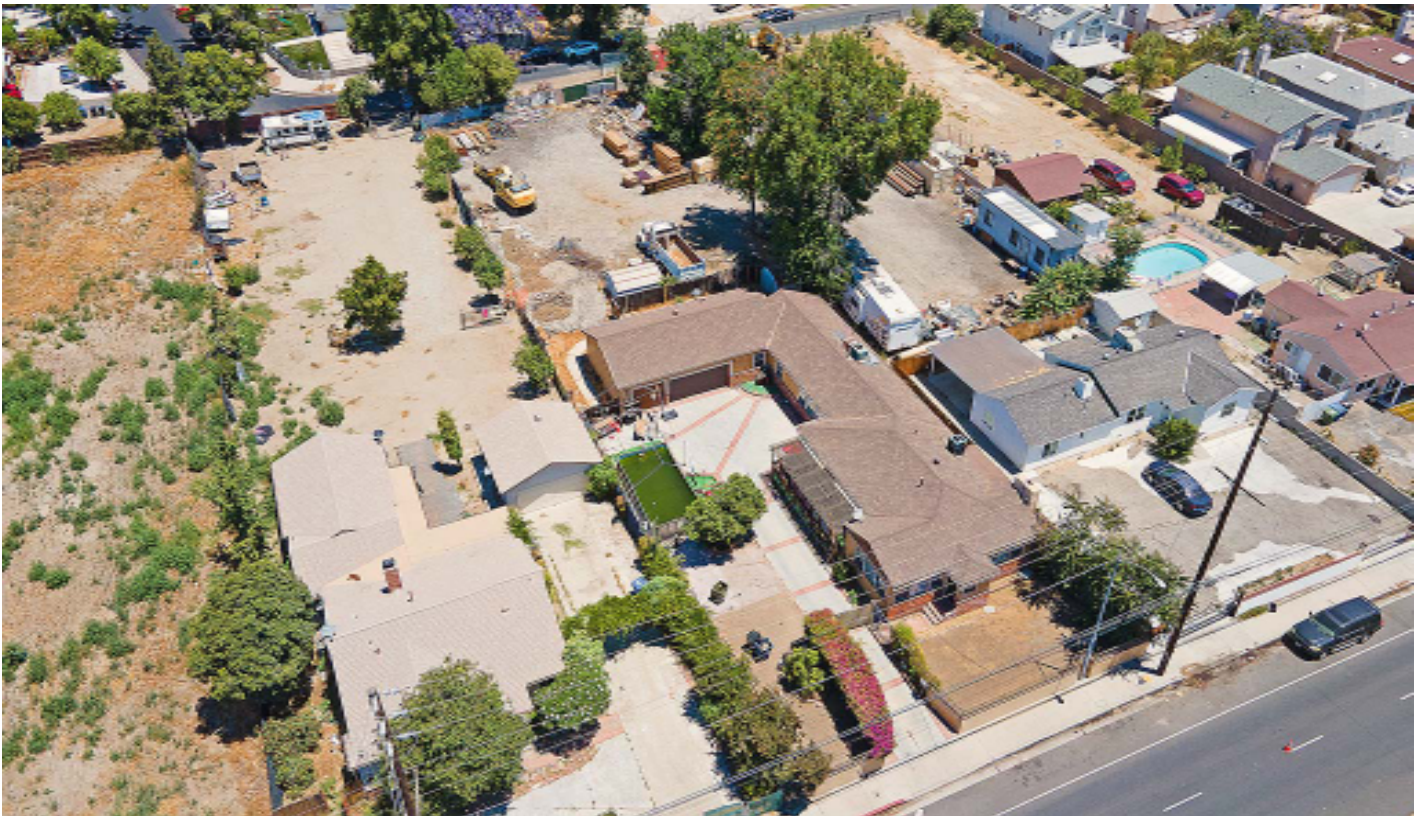
VP OF INVESTMENTS
DRE # 01274379
(818) 432-1627
MIKE@APLAGROUP.COM

JAMES ANTONUCCI

VP OF INVESTMENTS
DRE # 01822661
(818) 432-1513
JAMES@APLAGROUP.COM

SINGLE FAMILY / DEVELOPMENT

PHOTOS



MICHAEL PESCI & JAMES ANTONUCCI

VP OF INVESTMENTS & VP OF INVESTMENTS

DRE # 01274379 & DRE # 01822661

(818) 432-1627 & (818) 432-1513

apla GROUP

SINGLE FAMILY / DEVELOPMENT

PHOTOS



MICHAEL PESCI & JAMES ANTONUCCI

VP OF INVESTMENTS & VP OF INVESTMENTS

DRE # 01274379 & DRE # 01822661

(818) 432-1627 & (818) 432-1513



SINGLE FAMILY / DEVELOPMENT

PHOTOS



MICHAEL PESCI & JAMES ANTONUCCI
VP OF INVESTMENTS & VP OF INVESTMENTS
DRE # 01274379 & DRE # 01822661
(818) 432-1627 & (818) 432-1513



SINGLE FAMILY / DEVELOPMENT

PHOTOS



MICHAEL PESCI & JAMES ANTONUCCI

VP OF INVESTMENTS & VP OF INVESTMENTS

DRE # 01274379 & DRE # 01822661

(818) 432-1627 & (818) 432-1513

aplaGROUP

SINGLE FAMILY / DEVELOPMENT

PHOTOS



MICHAEL PESCI & JAMES ANTONUCCI
VP OF INVESTMENTS & VP OF INVESTMENTS
DRE # 01274379 & DRE # 01822661
(818) 432-1627 & (818) 432-1513

apla GROUP

SINGLE FAMILY / DEVELOPMENT

PHOTOS



MICHAEL PESCI & JAMES ANTONUCCI
VP OF INVESTMENTS & VP OF INVESTMENTS
DRE # 01274379 & DRE # 01822661
(818) 432-1627 & (818) 432-1513



SINGLE FAMILY / DEVELOPMENT

PHOTOS



MICHAEL PESCI & JAMES ANTONUCCI
VP OF INVESTMENTS & VP OF INVESTMENTS
DRE # 01274379 & DRE # 01822661
(818) 432-1627 & (818) 432-1513

aplaGROUP

SINGLE FAMILY / DEVELOPMENT

PHOTOS



MICHAEL PESCI & JAMES ANTONUCCI

VP OF INVESTMENTS & VP OF INVESTMENTS

DRE # 01274379 & DRE # 01822661

(818) 432-1627 & (818) 432-1513

aplaGROUP

SINGLE FAMILY / DEVELOPMENT

PHOTOS



MICHAEL PESCI & JAMES ANTONUCCI
VP OF INVESTMENTS & VP OF INVESTMENTS
DRE # 01274379 & DRE # 01822661
(818) 432-1627 & (818) 432-1513



SINGLE FAMILY / DEVELOPMENT

PHOTOS



MICHAEL PESCI & JAMES ANTONUCCI

VP OF INVESTMENTS & VP OF INVESTMENTS

DRE # 01274379 & DRE # 01822661

(818) 432-1627 & (818) 432-1513

apla GROUP

SINGLE FAMILY / DEVELOPMENT

AERIAL VIEW

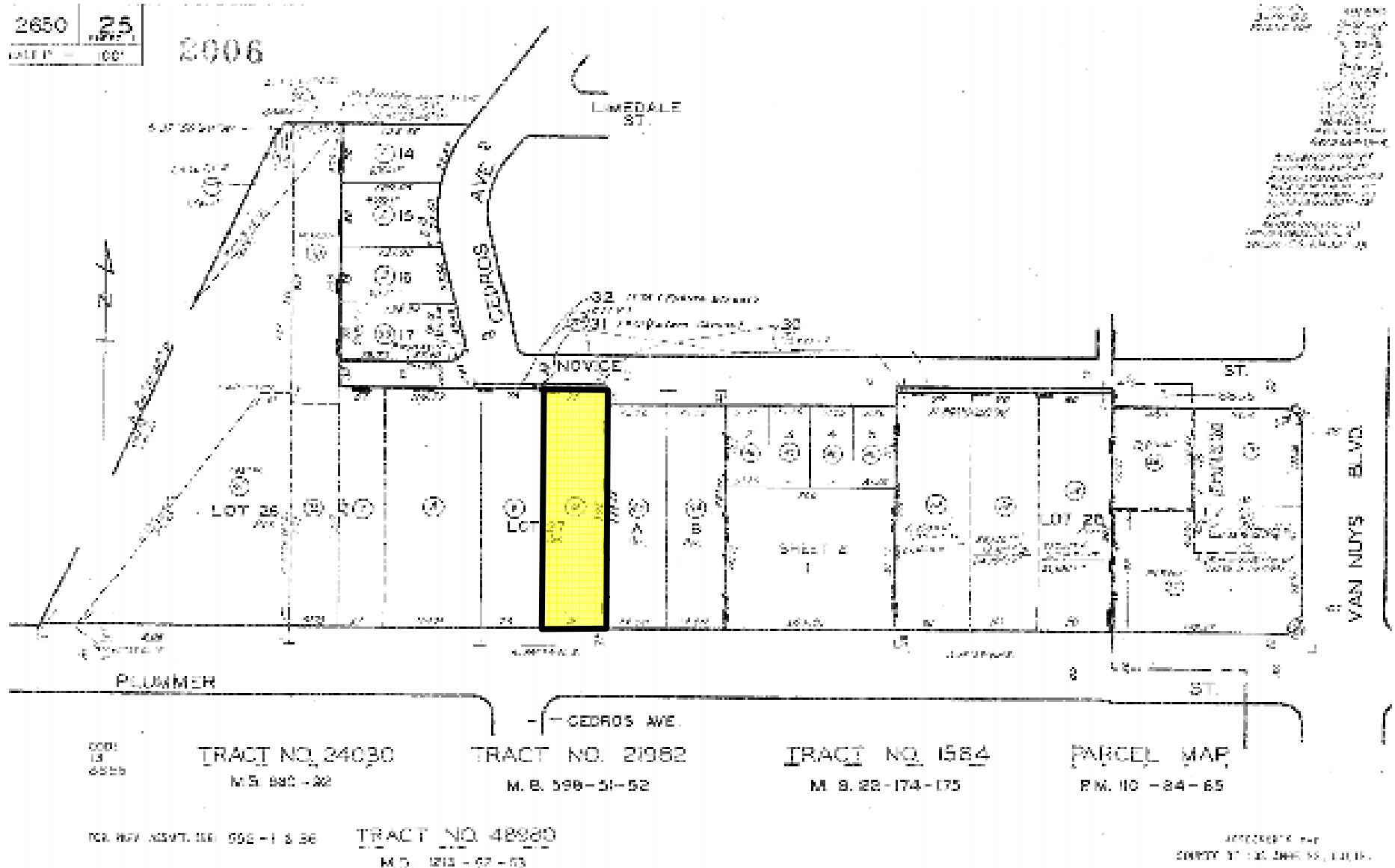


MICHAEL PESCI & JAMES ANTONUCCI
VP OF INVESTMENTS & VP OF INVESTMENTS
DRE # 01274379 & DRE # 01822661
(818) 432-1627 & (818) 432-1513



SINGLE FAMILY / DEVELOPMENT

PARCEL MAP



MICHAEL PESCI & JAMES ANTONUCCI

VP OF INVESTMENTS & VP OF INVESTMENTS

DRE # 01274379 & DRE # 01822661

(818) 432-1627 & (818) 432-1513



SINGLE FAMILY / DEVELOPMENT

STREET MAP



MICHAEL PESCI & JAMES ANTONUCCI

VP OF INVESTMENTS & VP OF INVESTMENTS

DRE # 01274379 & DRE # 01822661

(818) 432-1627 & (818) 432-1513

