

EXCLUSIVELY LISTED BY APLA GROUP

1497 W 29th St

LOS ANGELES , CA



PRICE:
CALL FOR PRICE

INVESTMENT HIGHLIGHTS:

- Great Los Angeles Location
- High Demand USC Rental Location
- Tremendous Rental Upside
- Unit Mix: 6-Single | 2-1+1
- On-Site Gated Parking
- On-Site Laundry
- Master Metered for Gas & Electric
-

aplaGROUP

KW COMMERCIAL

12001 VENTURA PLACE
SUITE #404
STUDIO CITY, CA 91604

PRESENTED BY:

MICHAEL PESCI
VP OF INVESTMENTS
BRE # 01274379
(818) 432-1627
MIKE@APLAGROUP.COM

JAMES ANTONUCCI
VP OF INVESTMENTS
BRE # 01822661
(818) 432-1513
JAMES@APLAGROUP.COM

8 UNITS ON 29TH ST

RENT ROLL

| UNIT # | UNIT TYPE | CURRENT RENT | MARKET RENT |
|--------|-----------|--------------|-------------|
| 1 | 1+1 | \$1,550 | \$1,750 |
| 2 | Single | \$1,234 | \$1,425 |
| 3 | Single | \$1,450 | \$1,425 |
| 4 | Single | \$993 | \$1,425 |
| 5 | 1+1 | \$1,364 | \$1,750 |
| 6 | Single | \$841 | \$1,425 |
| 7 | Single | \$891 | \$1,425 |
| 8 | Single | \$1,130 | \$1,425 |
| TOTAL: | | \$9,453 | \$12,050 |

This information has been secured from sources we believe to be reliable, but we make no representations or warranties, expressed or implied as to the accuracy of the information. References to square footage or age are approximate. Buyer must verify the information and bears all risk for any inaccuracies.

MICHAEL PESCI & JAMES ANTONUCCI

VP OF INVESTMENTS & VP OF INVESTMENTS

BRE # 01274379 & BRE # 01822661

(818) 432-1627 & (818) 432-1513



8 UNITS ON 29TH ST

PHOTOS



MICHAEL PESCI & JAMES ANTONUCCI

VP OF INVESTMENTS & VP OF INVESTMENTS

BRE # 01274379 & BRE # 01822661

(818) 432-1627 & (818) 432-1513

apla GROUP

8 UNITS ON 29TH ST

PHOTOS



MICHAEL PESCI & JAMES ANTONUCCI

VP OF INVESTMENTS & VP OF INVESTMENTS

BRE # 01274379 & BRE # 01822661

(818) 432-1627 & (818) 432-1513

apla GROUP

8 UNITS ON 29TH ST

PHOTOS



MICHAEL PESCI & JAMES ANTONUCCI

VP OF INVESTMENTS & VP OF INVESTMENTS

BRE # 01274379 & BRE # 01822661

(818) 432-1627 & (818) 432-1513

apla GROUP

8 UNITS ON 29TH ST

PHOTOS



MICHAEL PESCI & JAMES ANTONUCCI

VP OF INVESTMENTS & VP OF INVESTMENTS

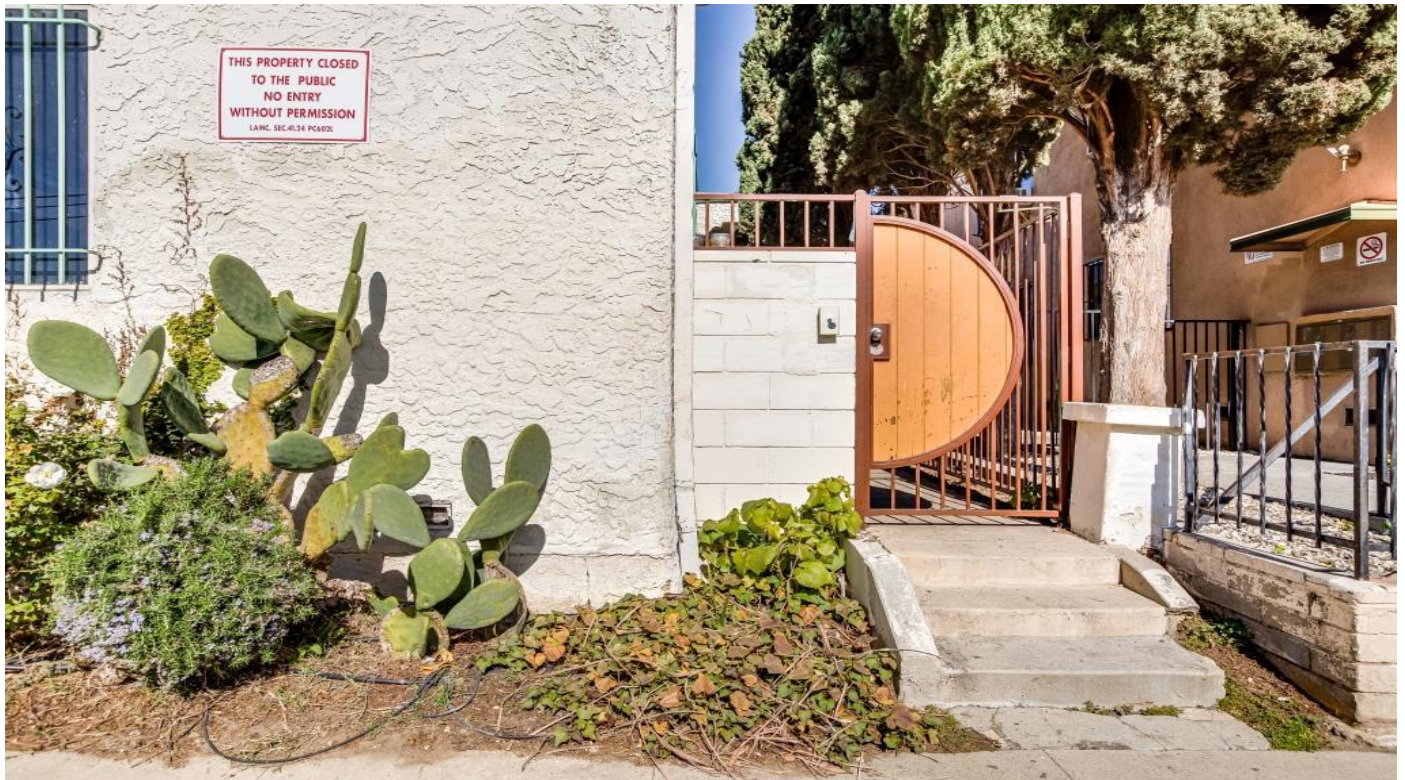
BRE # 01274379 & BRE # 01822661

(818) 432-1627 & (818) 432-1513

apla GROUP

8 UNITS ON 29TH ST

PHOTOS



MICHAEL PESCI & JAMES ANTONUCCI

VP OF INVESTMENTS & VP OF INVESTMENTS

BRE # 01274379 & BRE # 01822661

(818) 432-1627 & (818) 432-1513

apla GROUP

PHOTOS



MICHAEL PESCI & JAMES ANTONUCCI

VP OF INVESTMENTS & VP OF INVESTMENTS

BRE # 01274379 & BRE # 01822661

(818) 432-1627 & (818) 432-1513

8 UNITS ON 29TH ST

AERIAL VIEW



MICHAEL PESCI & JAMES ANTONUCCI

VP OF INVESTMENTS & VP OF INVESTMENTS

BRE # 01274379 & BRE # 01822661

(818) 432-1627 & (818) 432-1513

apla GROUP

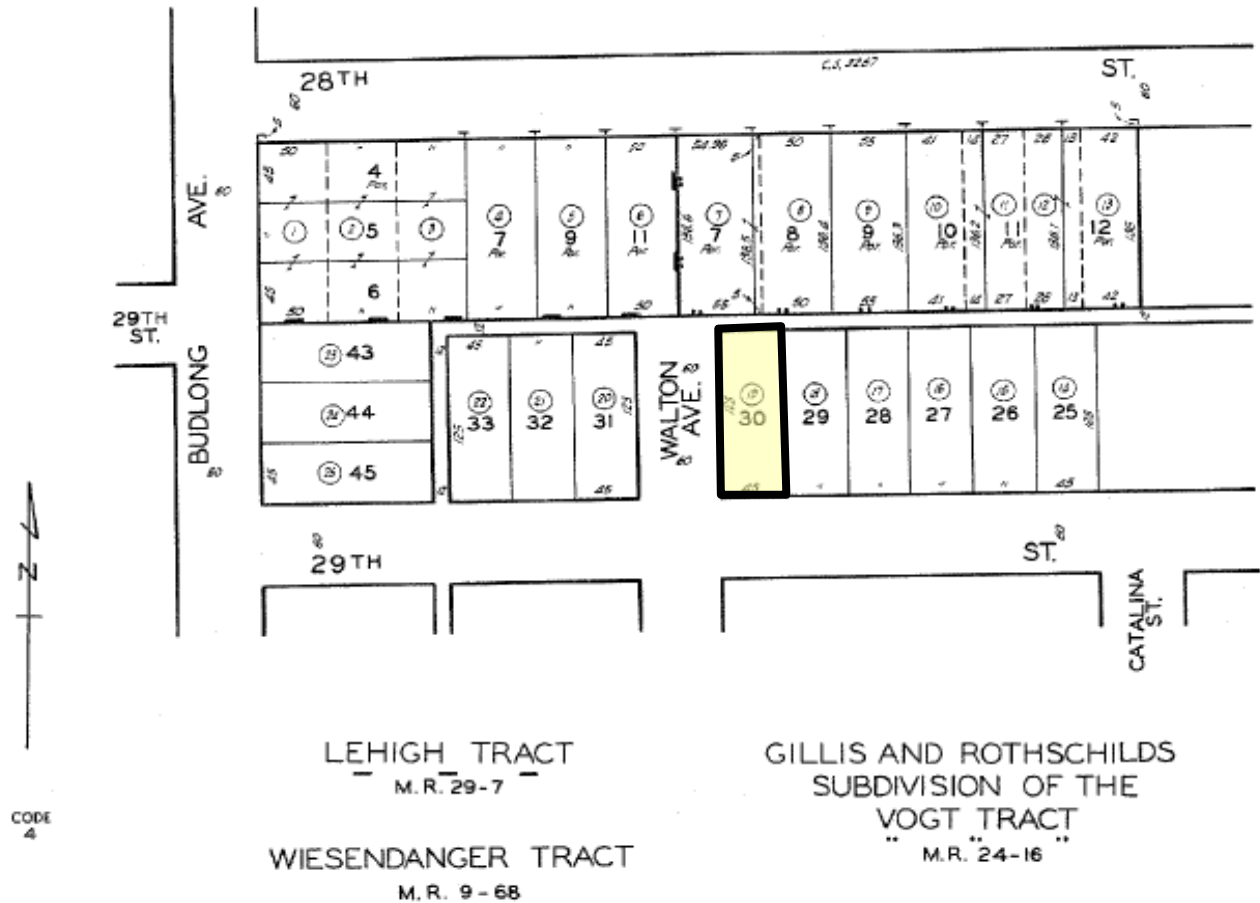
8 UNITS ON 29TH ST

PARCEL MAP

5054 | 34

SCALE 1" = 80'

REFILED



FOR PREV. ASSMT. SEE: 47-6,10&11

ASSESSOR'S MAP
COUNTY OF LOS ANGELES, CALIF.

MICHAEL PESCI & JAMES ANTONUCCI

VP OF INVESTMENTS & VP OF INVESTMENTS

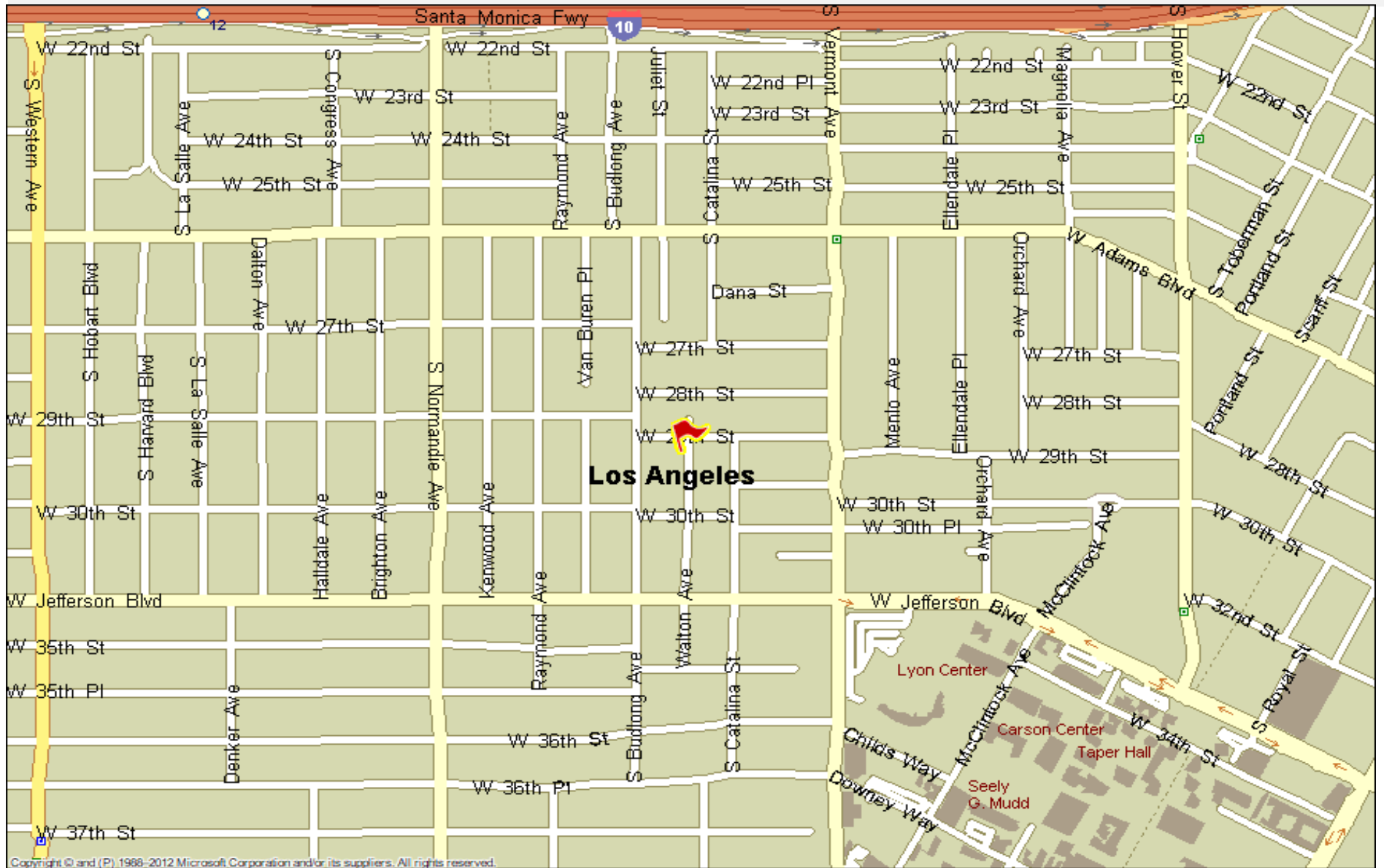
BRE # 01274379 & BRE # 01822661

(818) 432-1627 & (818) 432-1513



8 UNITS ON 29TH ST

STREET MAP



MICHAEL PESCI & JAMES ANTONUCCI
VP OF INVESTMENTS & VP OF INVESTMENTS
BRE # 01274379 & BRE # 01822661
(818) 432-1627 & (818) 432-1513

