

15270 SIERRA HWY

SANTA CLARITA, CA



PRICE:

\$1,465,000

INVESTMENT HIGHLIGHTS:

- Great Santa Clarita Location
- Large 4.23 Acre Lot!
- High Traffic Location on Sierra Hwy!
- Commercial Owner/User Opportunity!
- Lack of Inventory on Market
- May Be Open To Various Uses!
- Zoned LACC3-M1
- APN #2813-024-004

aplaGROUP

KW COMMERCIAL

12001 VENTURA PLACE
SUITE #404
STUDIO CITY, CA 91604

PRESENTED BY:

MICHAEL PESCI

VP OF INVESTMENTS
BRE # 01274379
(818) 432-1627
MIKE@APLAGROUP.COM

JAMES ANTONUCCI

VP OF INVESTMENTS
BRE # 01822661
(818) 432-1513
JAMES@APLAGROUP.COM

PHOTOS



MICHAEL PESCI & JAMES ANTONUCCI

VP OF INVESTMENTS & VP OF INVESTMENTS

BRE # 01274379 & BRE # 01822661

(818) 432-1627 & (818) 432-1513

PHOTOS



MICHAEL PESCI & JAMES ANTONUCCI

VP OF INVESTMENTS & VP OF INVESTMENTS

BRE # 01274379 & BRE # 01822661

(818) 432-1627 & (818) 432-1513

15270 SIERRA HWY

PHOTOS



MICHAEL PESCI & JAMES ANTONUCCI

VP OF INVESTMENTS & VP OF INVESTMENTS

BRE # 01274379 & BRE # 01822661

(818) 432-1627 & (818) 432-1513

aplaGROUP

15270 SIERRA HWY

PHOTOS



MICHAEL PESCI & JAMES ANTONUCCI

VP OF INVESTMENTS & VP OF INVESTMENTS

BRE # 01274379 & BRE # 01822661

(818) 432-1627 & (818) 432-1513

aplaGROUP

PHOTOS



MICHAEL PESCI & JAMES ANTONUCCI

VP OF INVESTMENTS & VP OF INVESTMENTS

BRE # 01274379 & BRE # 01822661

(818) 432-1627 & (818) 432-1513

PHOTOS



MICHAEL PESCI & JAMES ANTONUCCI

VP OF INVESTMENTS & VP OF INVESTMENTS

BRE # 01274379 & BRE # 01822661

(818) 432-1627 & (818) 432-1513

15270 SIERRA HWY

PHOTOS

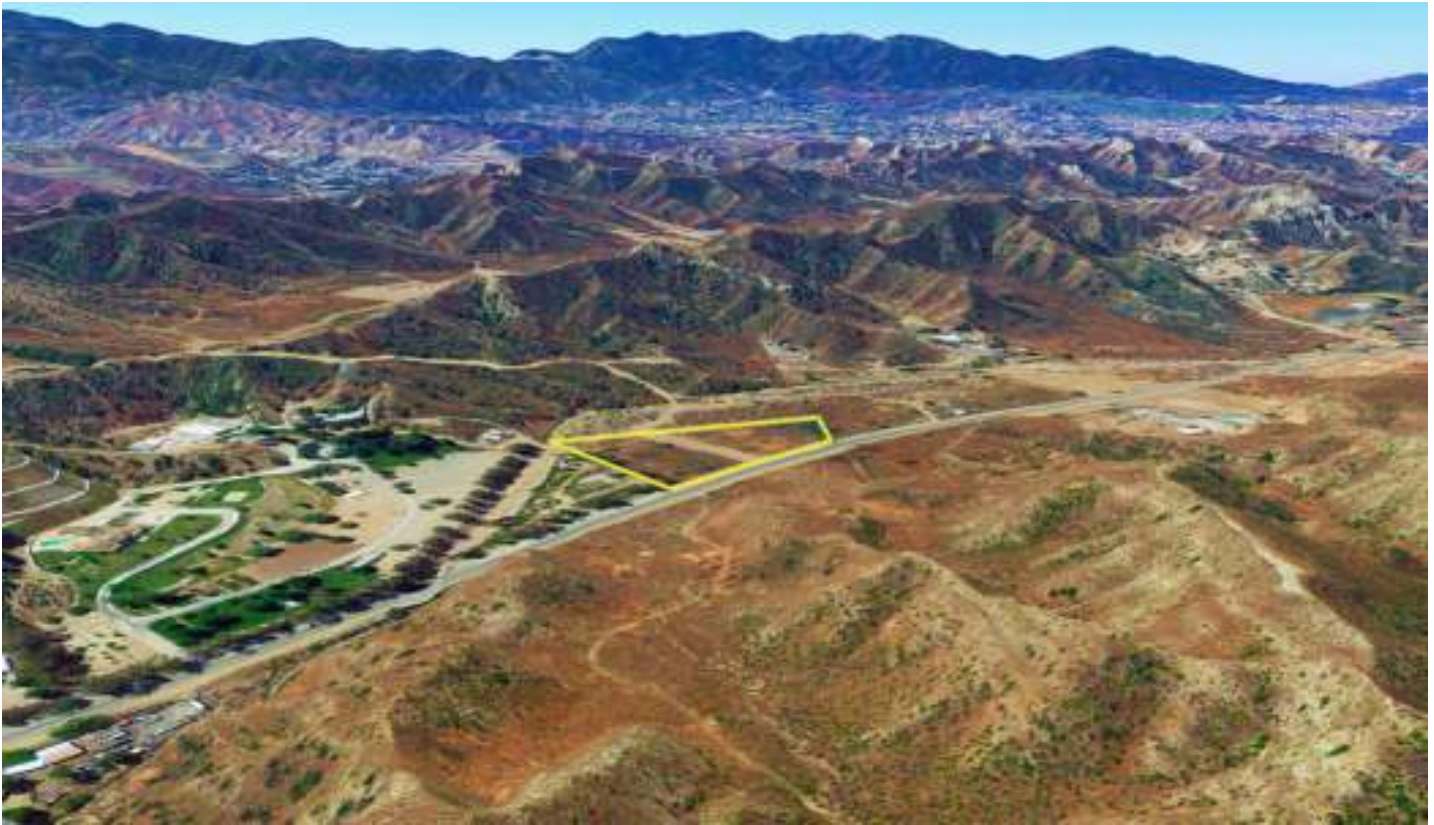


MICHAEL PESCI & JAMES ANTONUCCI
VP OF INVESTMENTS & VP OF INVESTMENTS
BRE # 01274379 & BRE # 01822661
(818) 432-1627 & (818) 432-1513



15270 SIERRA HWY

PHOTOS



MICHAEL PESCI & JAMES ANTONUCCI

VP OF INVESTMENTS & VP OF INVESTMENTS

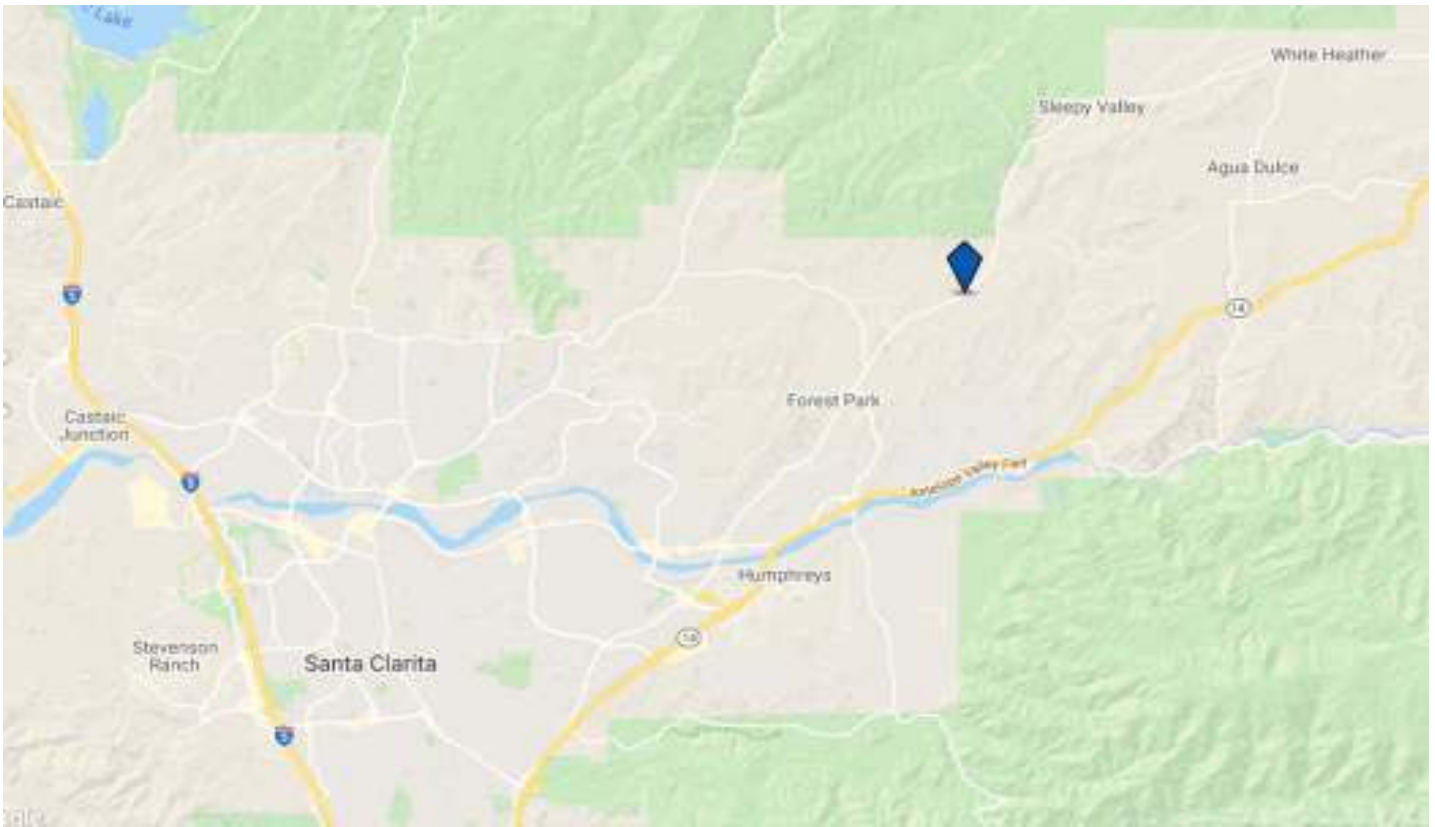
BRE # 01274379 & BRE # 01822661

(818) 432-1627 & (818) 432-1513

aplaGROUP

15270 SIERRA HWY

PHOTOS



MICHAEL PESCI & JAMES ANTONUCCI

VP OF INVESTMENTS & VP OF INVESTMENTS

BRE # 01274379 & BRE # 01822661

(818) 432-1627 & (818) 432-1513

