

4029 S Cloverdale Ave

LOS ANGELES, CA



PRICE:

\$950,000

INVESTMENT HIGHLIGHTS:

- Large Lot Approximately 13,210 Sq. Ft.
- City Lights / Panoramic Views!
- All Utilities in Street!
- Zoned for Residential Use
- Excellent Potential to Build Dream Home!
- Developers Dream!
- Central Baldwin Hills Location!
- Close to Metro Expo Line!

aplaGROUP

KW COMMERCIAL

12001 VENTURA PLACE
SUITE #404
STUDIO CITY, CA 91604

PRESENTED BY:

MICHAEL PESCI

VP OF INVESTMENTS
BRE # 01274379
(818) 432-1627
MIKE@APLAGROUP.COM

JAMES ANTONUCCI

VP OF INVESTMENTS
BRE # 01822661
(818) 432-1513
JAMES@APLAGROUP.COM

RESIDENTIAL LAND ON CLOVERDALE

PROPERTY PROFILE

PROPERTY ADDRESS:	4029 S Cloverdale Ave Los Angeles, CA	LOT SIZE:	13,210
ASSESSOR PARCEL #:	5029-039-006	ZONING:	LAR1



INVESTMENT HIGHLIGHTS

- Large Lot Approximately 13,210 Sq. Ft.
- Zoned for Residential Use
- Central Baldwin Hills Location!
- City Lights / Panoramic Views!
- All Utilities in Street!
- Developers Dream!
- Excellent Potential to Build Dream Home!
- Close to Metro Expo Line!

MICHAEL PESCI & JAMES ANTONUCCI

VP OF INVESTMENTS & VP OF INVESTMENTS

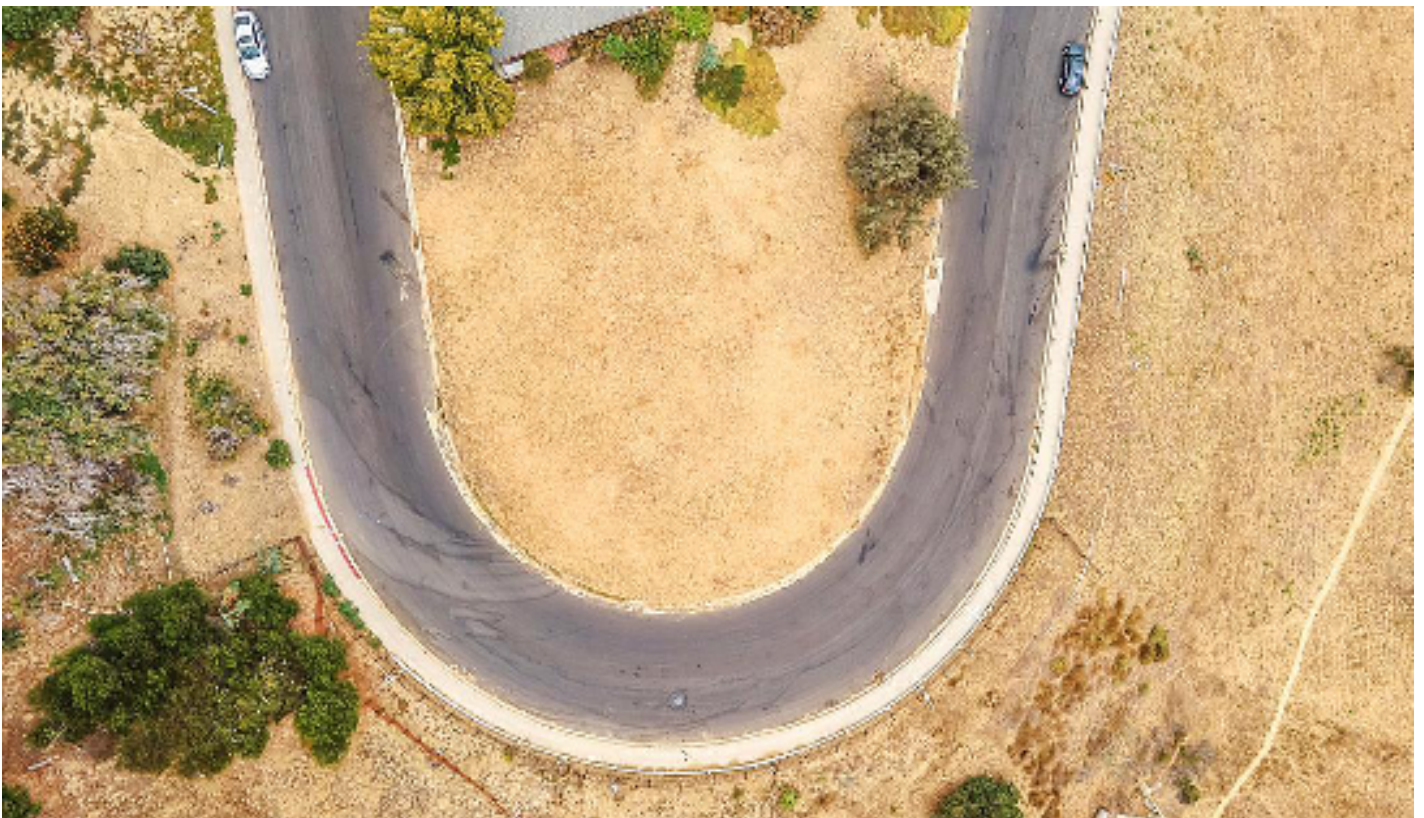
BRE # 01274379 & BRE # 01822661

(818) 432-1627 & (818) 432-1513



RESIDENTIAL LAND ON CLOVERDALE

PHOTOS



MICHAEL PESCI & JAMES ANTONUCCI

VP OF INVESTMENTS & VP OF INVESTMENTS

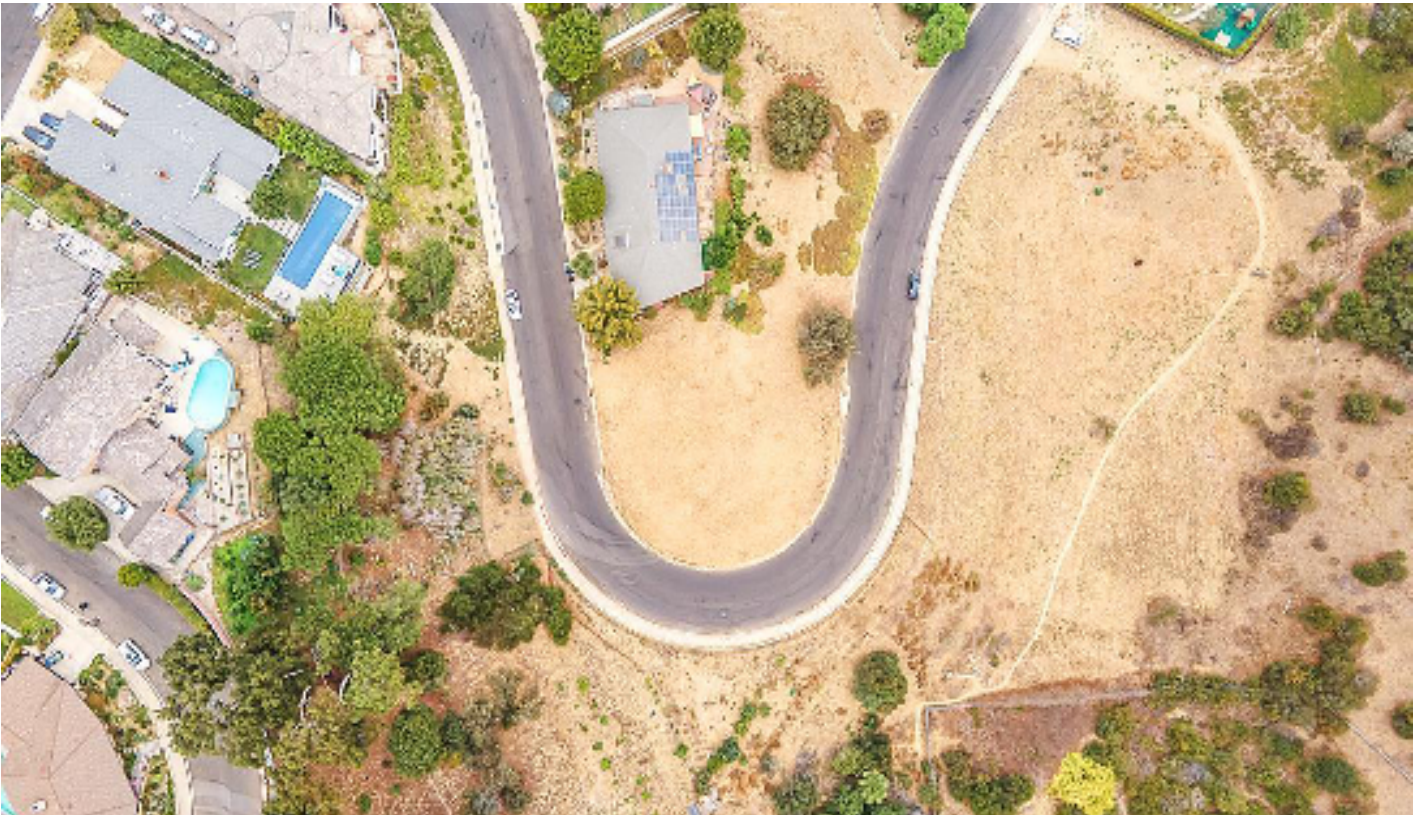
BRE # 01274379 & BRE # 01822661

(818) 432-1627 & (818) 432-1513

aplaGROUP

RESIDENTIAL LAND ON CLOVERDALE

PHOTOS



MICHAEL PESCI & JAMES ANTONUCCI

VP OF INVESTMENTS & VP OF INVESTMENTS

BRE # 01274379 & BRE # 01822661

(818) 432-1627 & (818) 432-1513

aplaGROUP

RESIDENTIAL LAND ON CLOVERDALE

PHOTOS



MICHAEL PESCI & JAMES ANTONUCCI

VP OF INVESTMENTS & VP OF INVESTMENTS

BRE # 01274379 & BRE # 01822661

(818) 432-1627 & (818) 432-1513

aplaGROUP

RESIDENTIAL LAND ON CLOVERDALE

PHOTOS



MICHAEL PESCI & JAMES ANTONUCCI

VP OF INVESTMENTS & VP OF INVESTMENTS

BRE # 01274379 & BRE # 01822661

(818) 432-1627 & (818) 432-1513

aplaGROUP

RESIDENTIAL LAND ON CLOVERDALE

PHOTOS



MICHAEL PESCI & JAMES ANTONUCCI

VP OF INVESTMENTS & VP OF INVESTMENTS

BRE # 01274379 & BRE # 01822661

(818) 432-1627 & (818) 432-1513

aplaGROUP

RESIDENTIAL LAND ON CLOVERDALE

PHOTOS



MICHAEL PESCI & JAMES ANTONUCCI

VP OF INVESTMENTS & VP OF INVESTMENTS

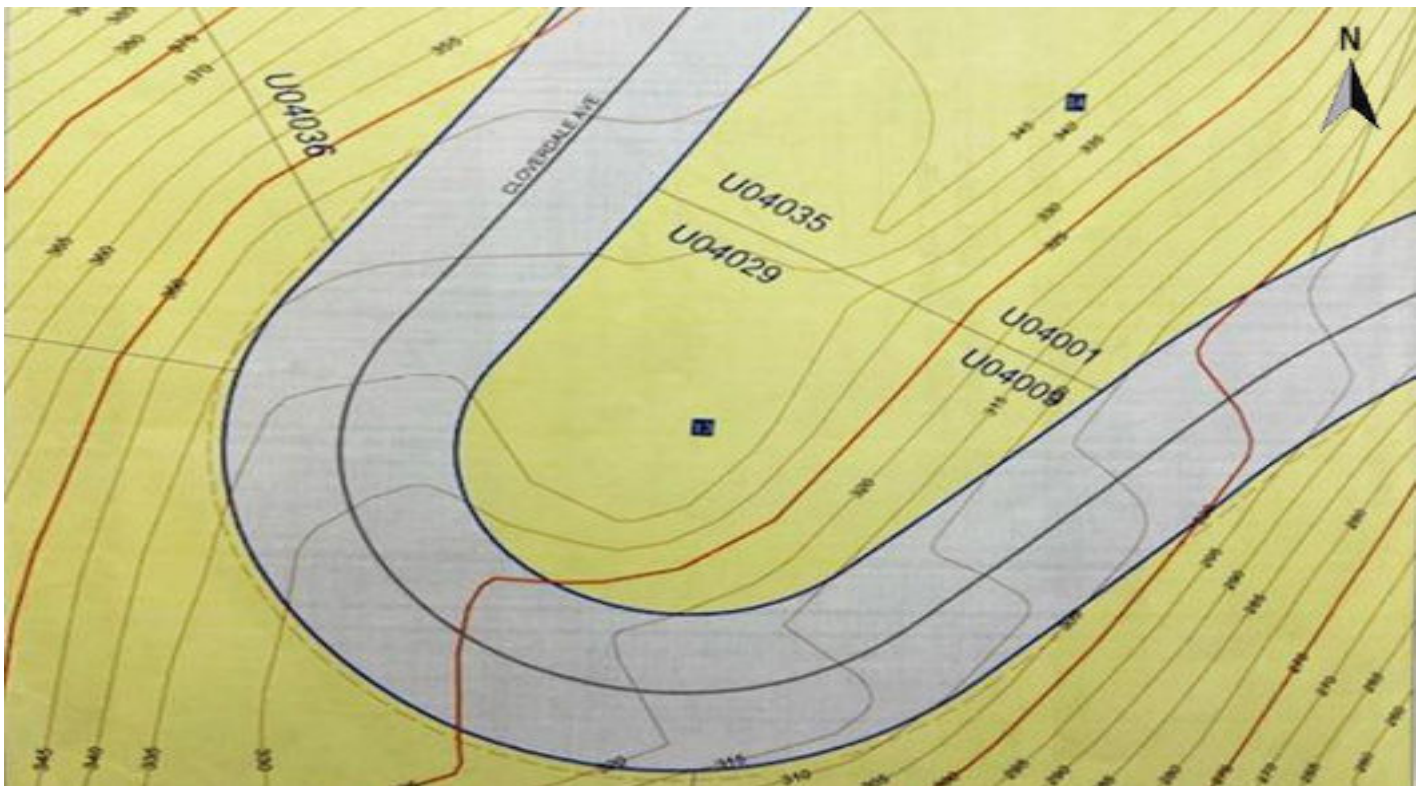
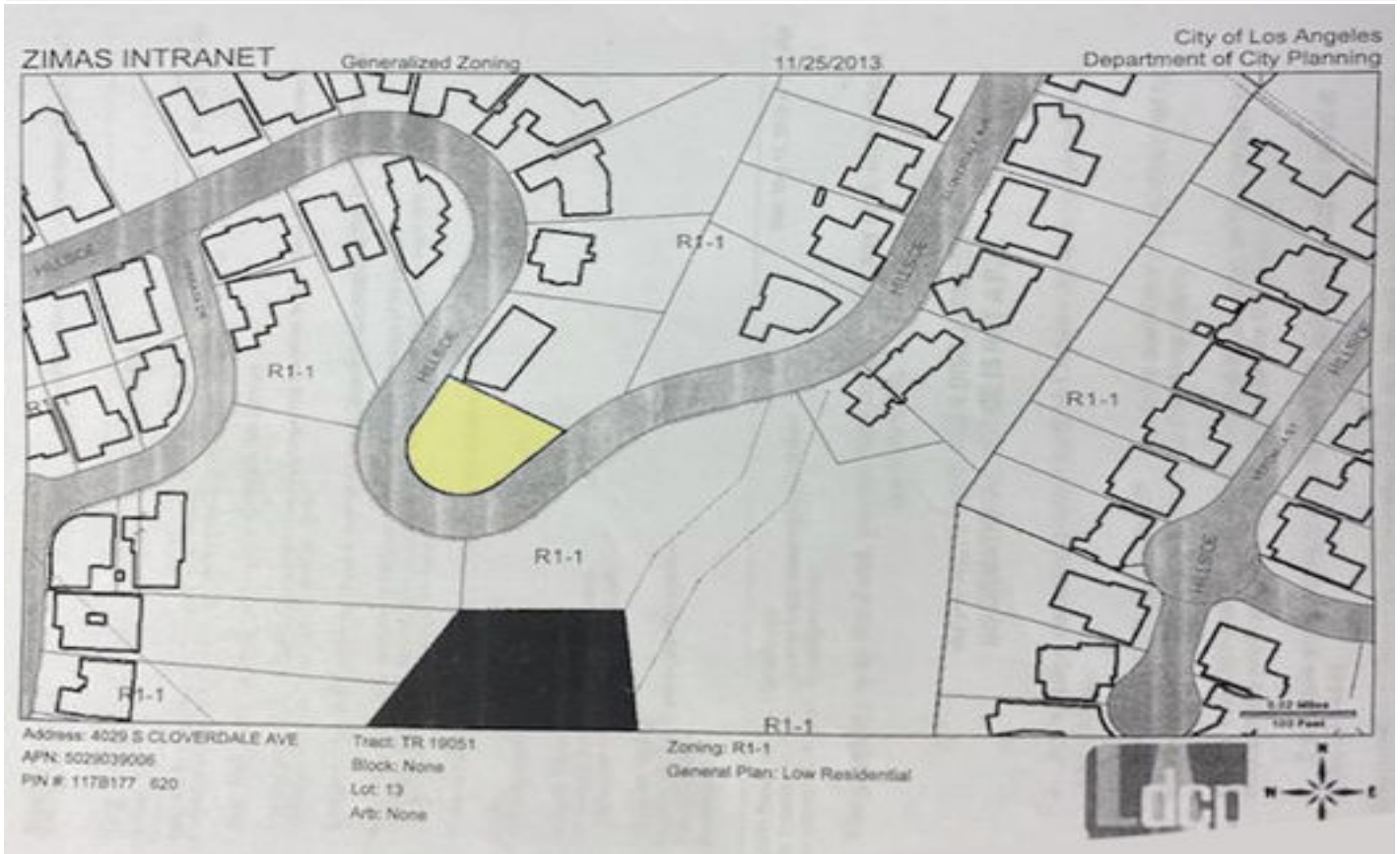
BRE # 01274379 & BRE # 01822661

(818) 432-1627 & (818) 432-1513

aplaGROUP

RESIDENTIAL LAND ON CLOVERDALE

PHOTOS



MICHAEL PESCI & JAMES ANTONUCCI

VP OF INVESTMENTS & VP OF INVESTMENTS

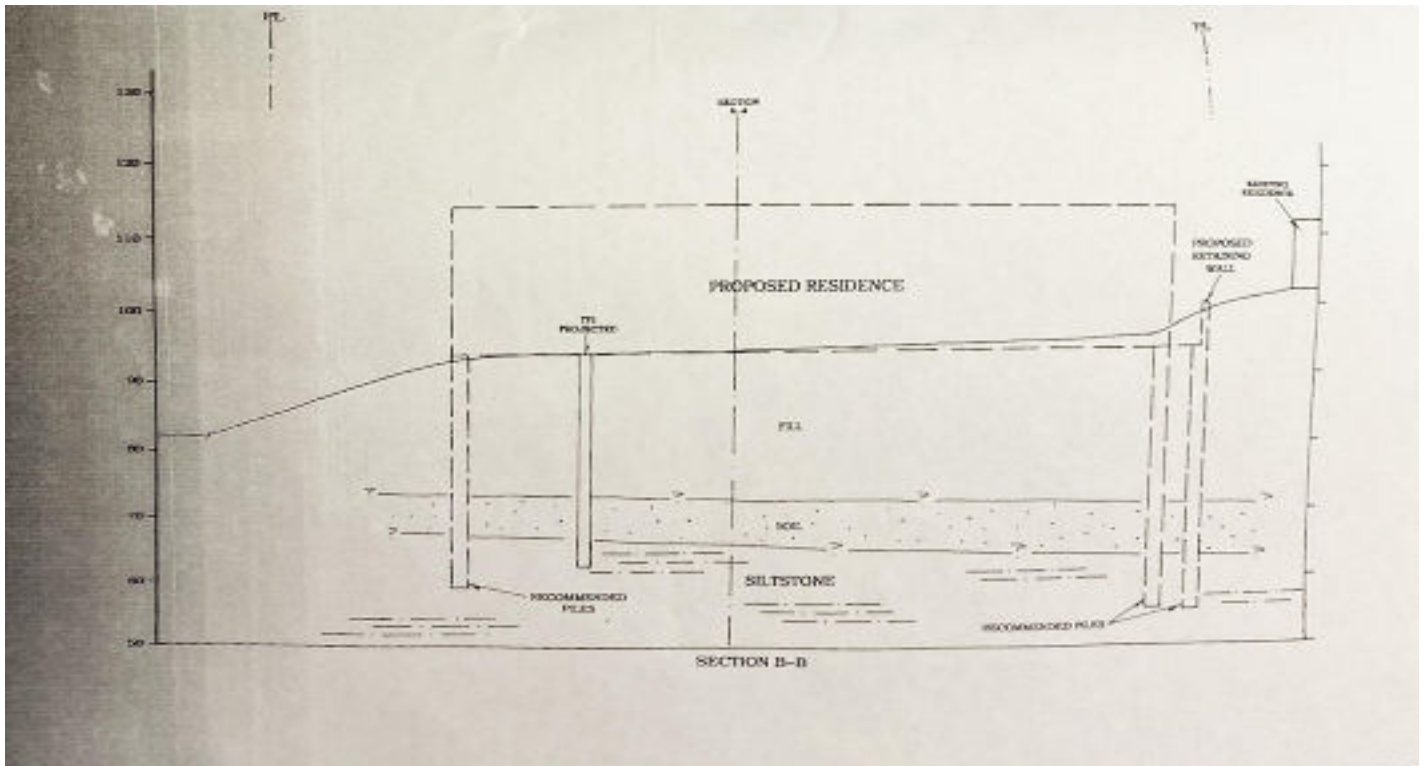
BRE # 01274379 & BRE # 01822661

(818) 432-1627 & (818) 432-1513

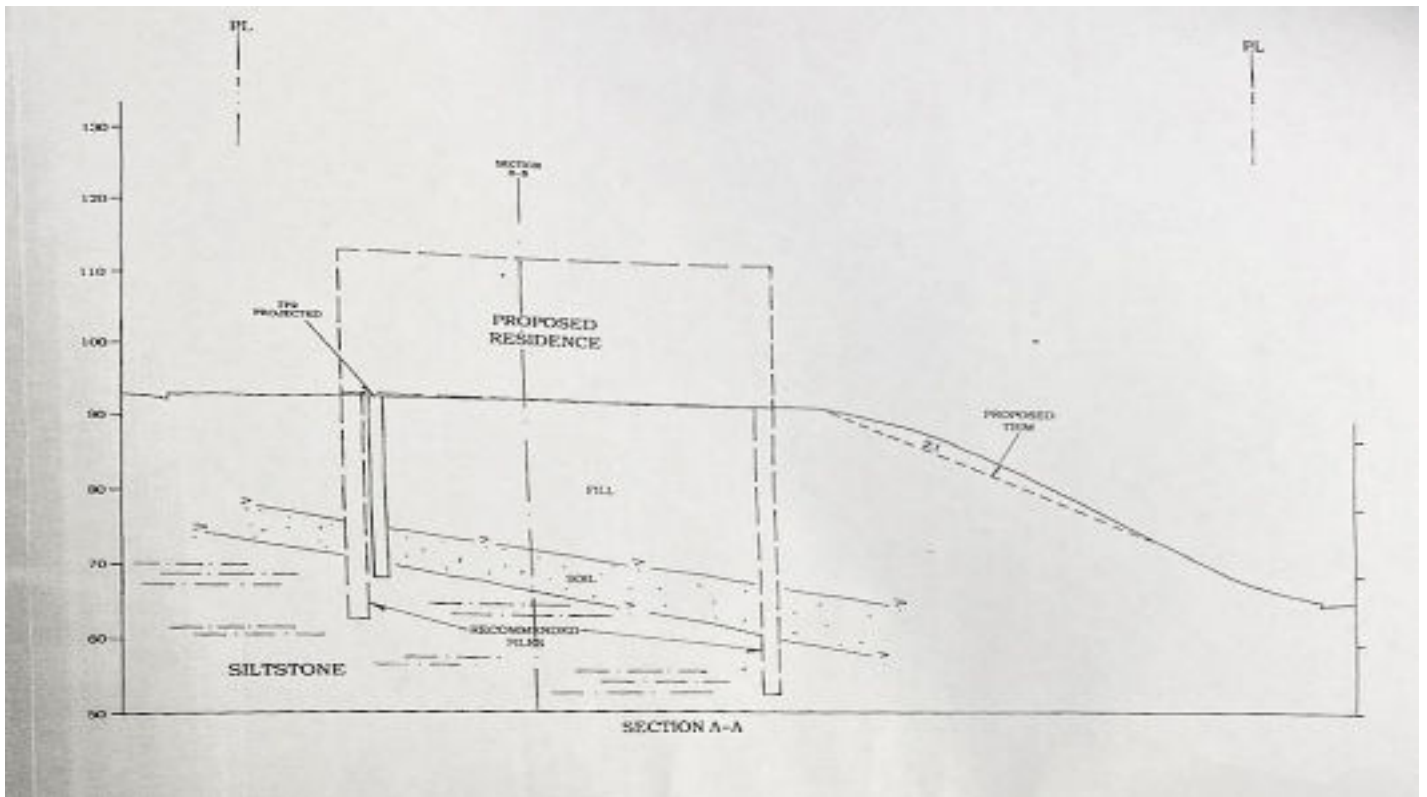


RESIDENTIAL LAND ON CLOVERDALE

PHOTOS



SCHICK GEOTECHNICAL, INC.
Geology and Soils Engineering



MICHAEL PESCI & JAMES ANTONUCCI

VP OF INVESTMENTS & VP OF INVESTMENTS

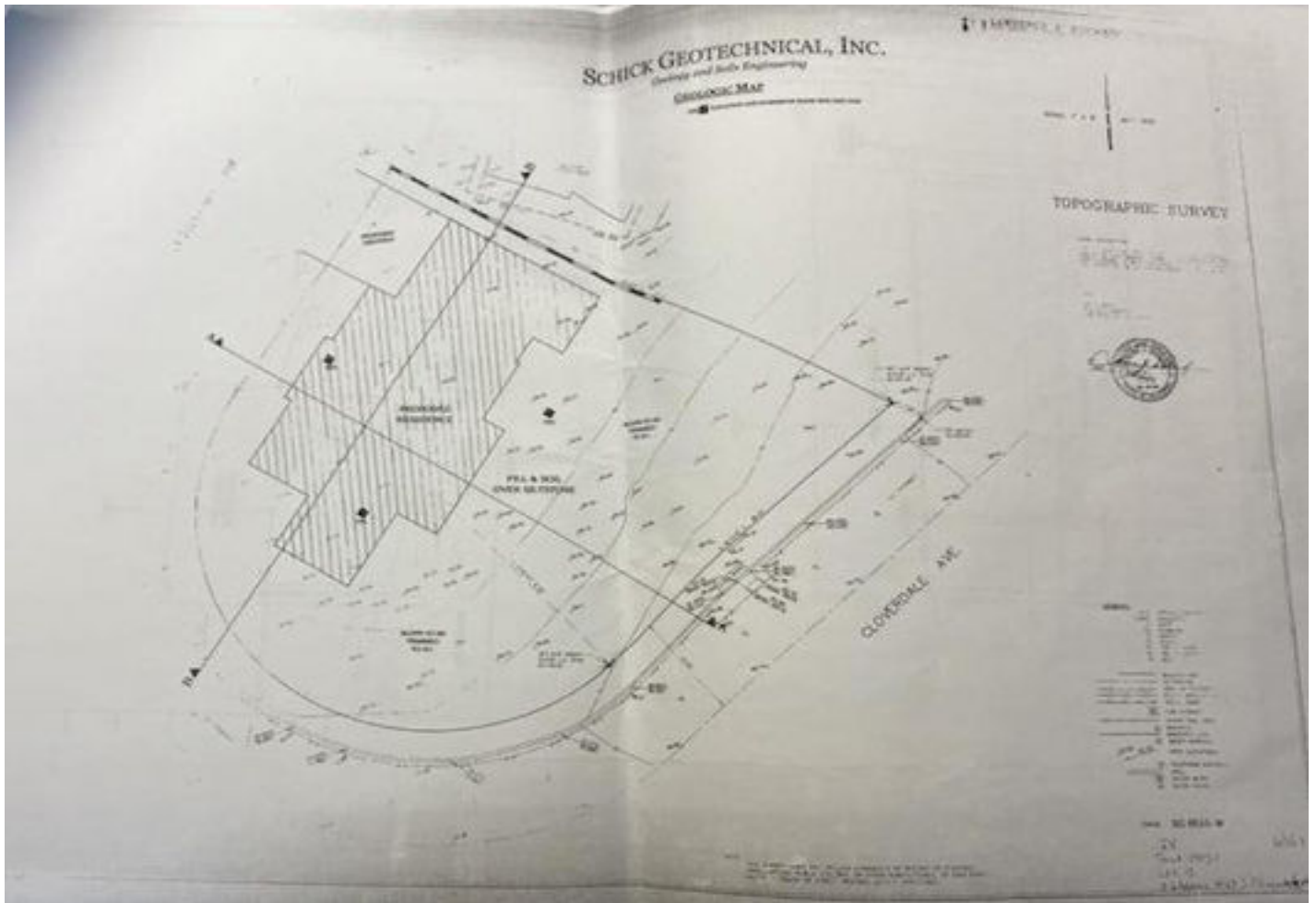
BRE # 01274379 & BRE # 01822661

(818) 432-1627 & (818) 432-1513



RESIDENTIAL LAND ON CLOVERDALE

PHOTOS



MICHAEL PESCI & JAMES ANTONUCCI

VP OF INVESTMENTS & VP OF INVESTMENTS

BRE # 01274379 & BRE # 01822661

(818) 432-1627 & (818) 432-1513



RESIDENTIAL LAND ON CLOVERDALE

AERIAL VIEW



MICHAEL PESCI & JAMES ANTONUCCI

VP OF INVESTMENTS & VP OF INVESTMENTS

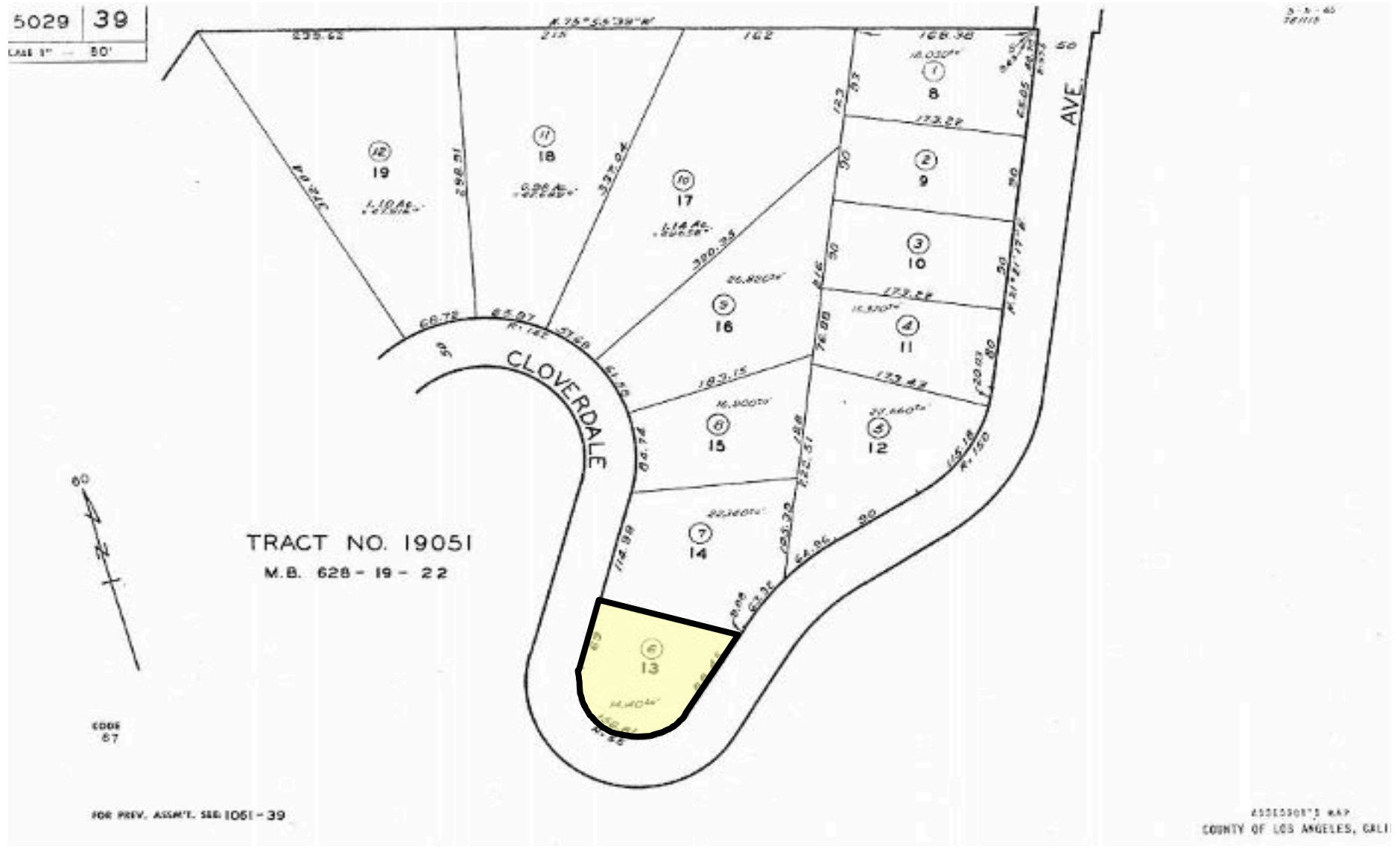
BRE # 01274379 & BRE # 01822661

(818) 432-1627 & (818) 432-1513

aplaGROUP

RESIDENTIAL LAND ON CLOVERDALE

PARCEL MAP



MICHAEL PESCI & JAMES ANTONUCCI

VP OF INVESTMENTS & VP OF INVESTMENTS

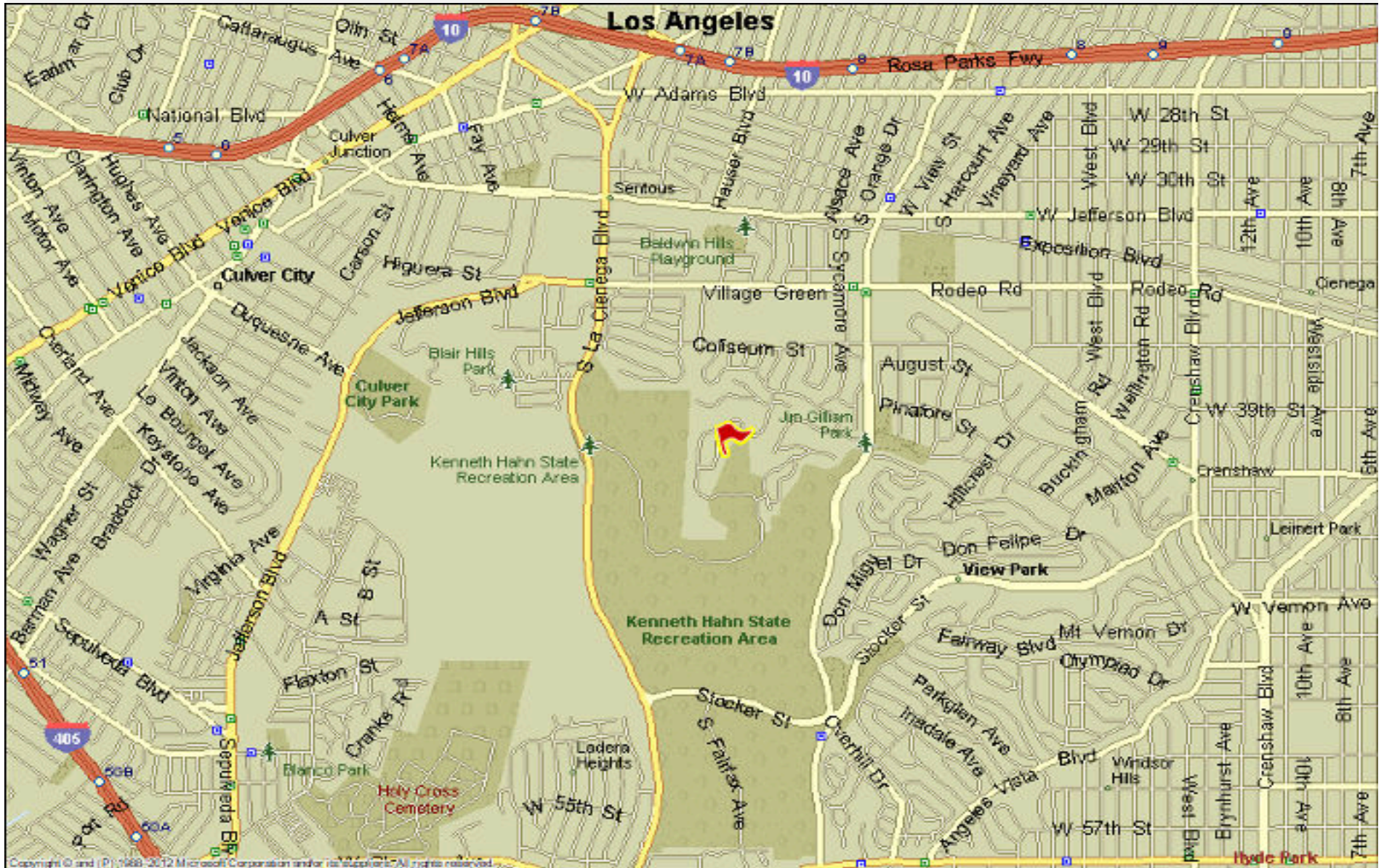
BRE # 01274379 & BRE # 01822661

(818) 432-1627 & (818) 432-1513



RESIDENTIAL LAND ON CLOVERDALE

STREET MAP



MICHAEL PESCI & JAMES ANTONUCCI

VP OF INVESTMENTS & VP OF INVESTMENTS

BRE # 01274379 & BRE # 01822661

(818) 432-1627 & (818) 432-1513

