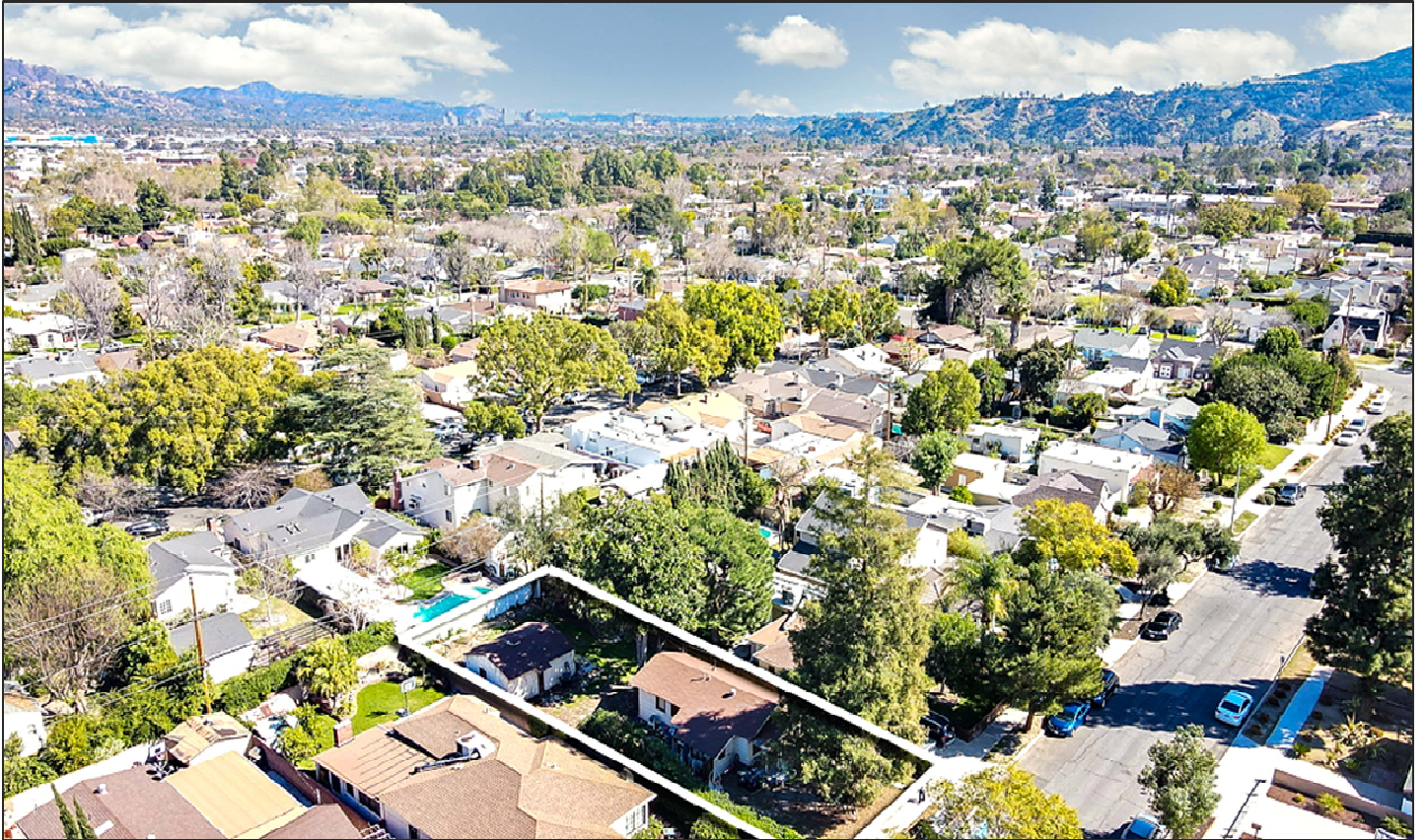


440 N. Orchard Dr.

BURBANK, CA



PRICE:

\$806,000

PROPERTY HIGHLIGHTS:

- Great Burbank Location
- 3 Bed + 1 Bath Single-Family Residence
- Large Lot Approximately 6,748 Sq. Ft.
- Development Opportunity!
- Zoning: BUR1YY
- Near Studios and Metro!
- Beautiful Tree Lined Street!
- High Demand Rental Location



KW COMMERCIAL

12001 VENTURA PLACE
SUITE #404
STUDIO CITY, CA 91604

PRESENTED BY:

MICHAEL PESCI

VP OF INVESTMENTS
DRE # 01274379
(818) 432-1627
MIKE@APLAGROUP.COM

JAMES ANTONUCCI

VP OF INVESTMENTS
DRE # 01822661
(818) 432-1513
JAMES@APLAGROUP.COM

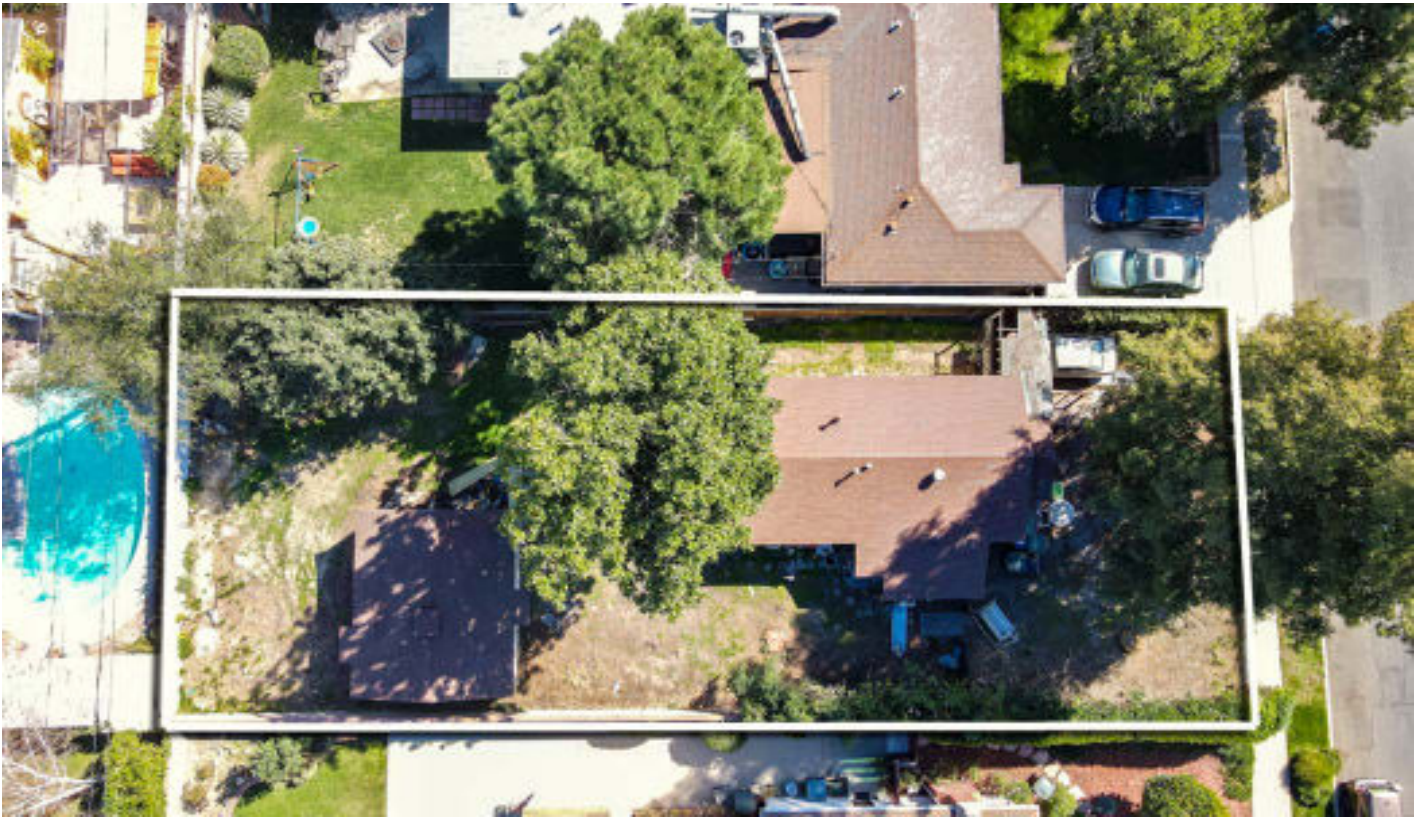
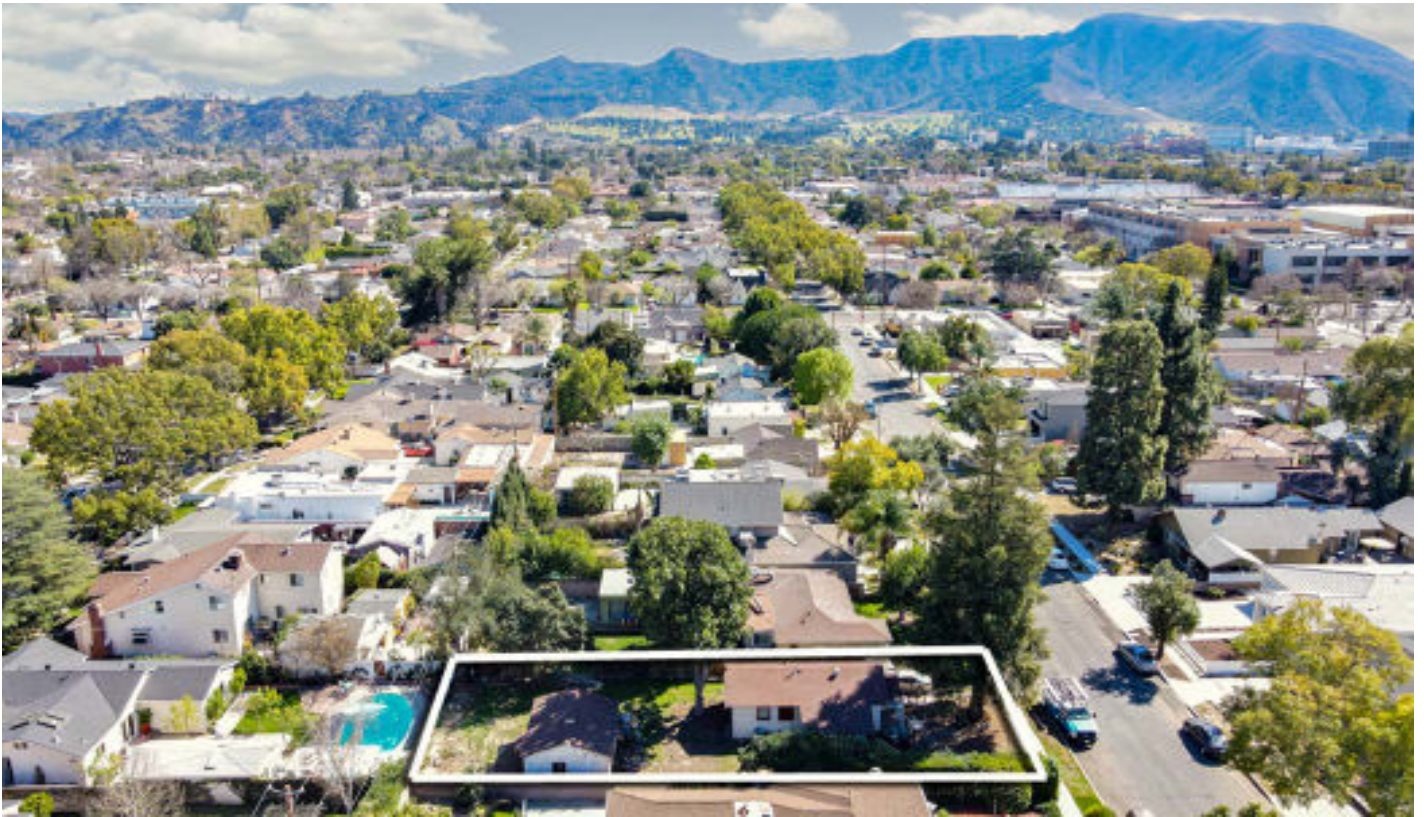
PHOTOS



MICHAEL PESCI & JAMES ANTONUCCI
VP OF INVESTMENTS & VP OF INVESTMENTS
DRE # 01274379 & DRE # 01822661
(818) 432-1627 & (818) 432-1513



PHOTOS



MICHAEL PESCI & JAMES ANTONUCCI
VP OF INVESTMENTS & VP OF INVESTMENTS
DRE # 01274379 & DRE # 01822661
(818) 432-1627 & (818) 432-1513



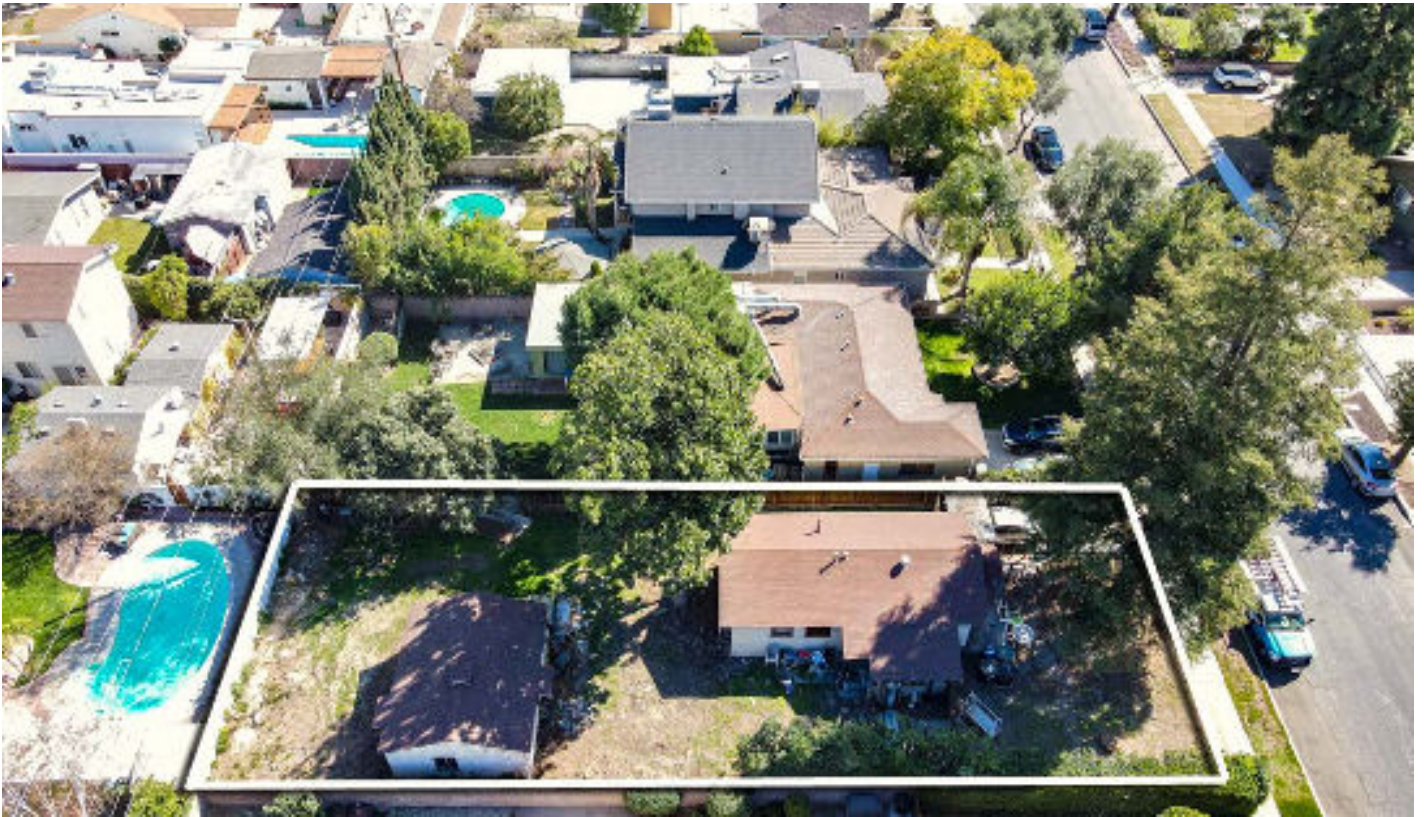
PHOTOS



MICHAEL PESCI & JAMES ANTONUCCI
VP OF INVESTMENTS & VP OF INVESTMENTS
DRE # 01274379 & DRE # 01822661
(818) 432-1627 & (818) 432-1513



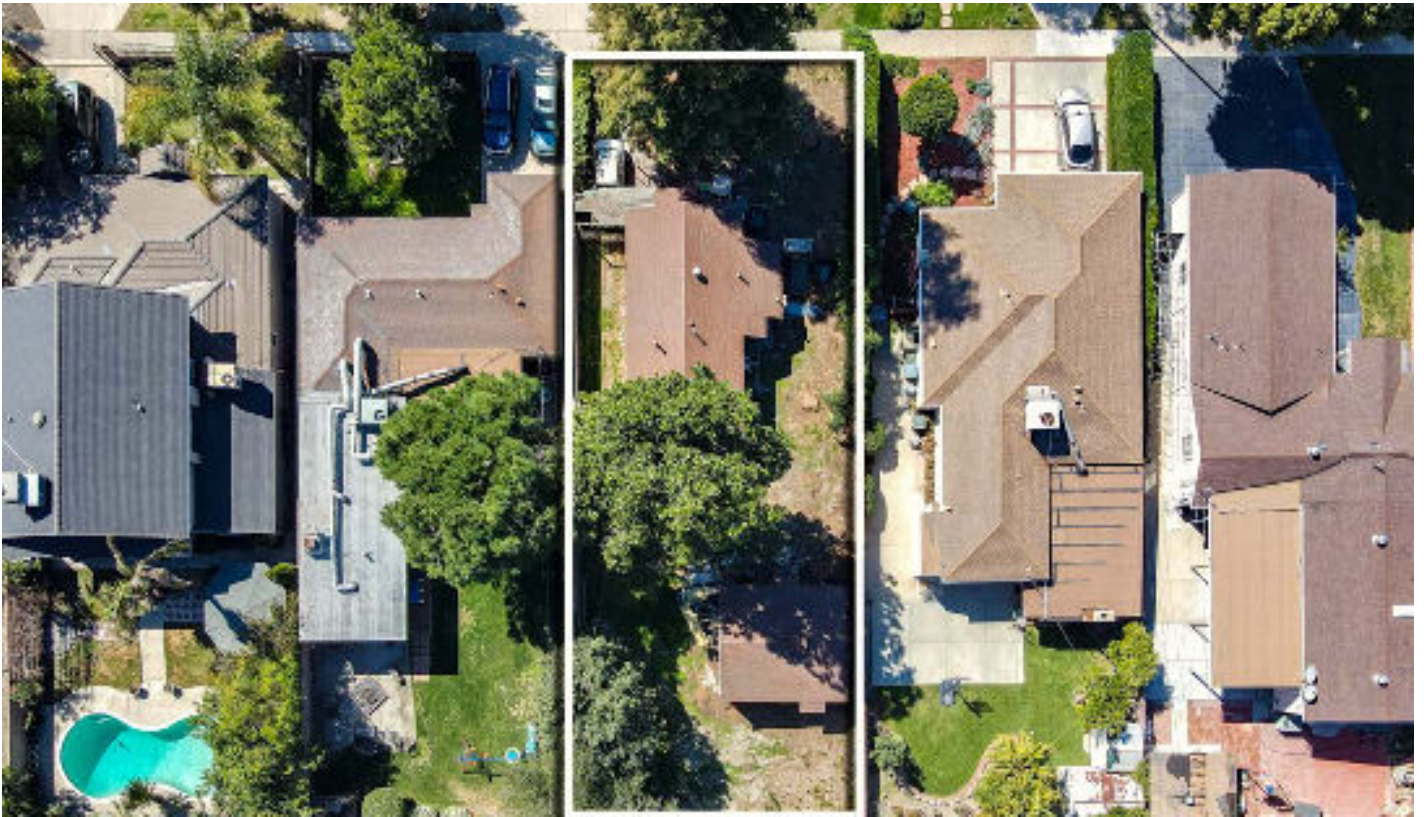
PHOTOS



MICHAEL PESCI & JAMES ANTONUCCI
VP OF INVESTMENTS & VP OF INVESTMENTS
DRE # 01274379 & DRE # 01822661
(818) 432-1627 & (818) 432-1513



PHOTOS



MICHAEL PESCI & JAMES ANTONUCCI
VP OF INVESTMENTS & VP OF INVESTMENTS
DRE # 01274379 & DRE # 01822661
(818) 432-1627 & (818) 432-1513



AERIAL VIEW



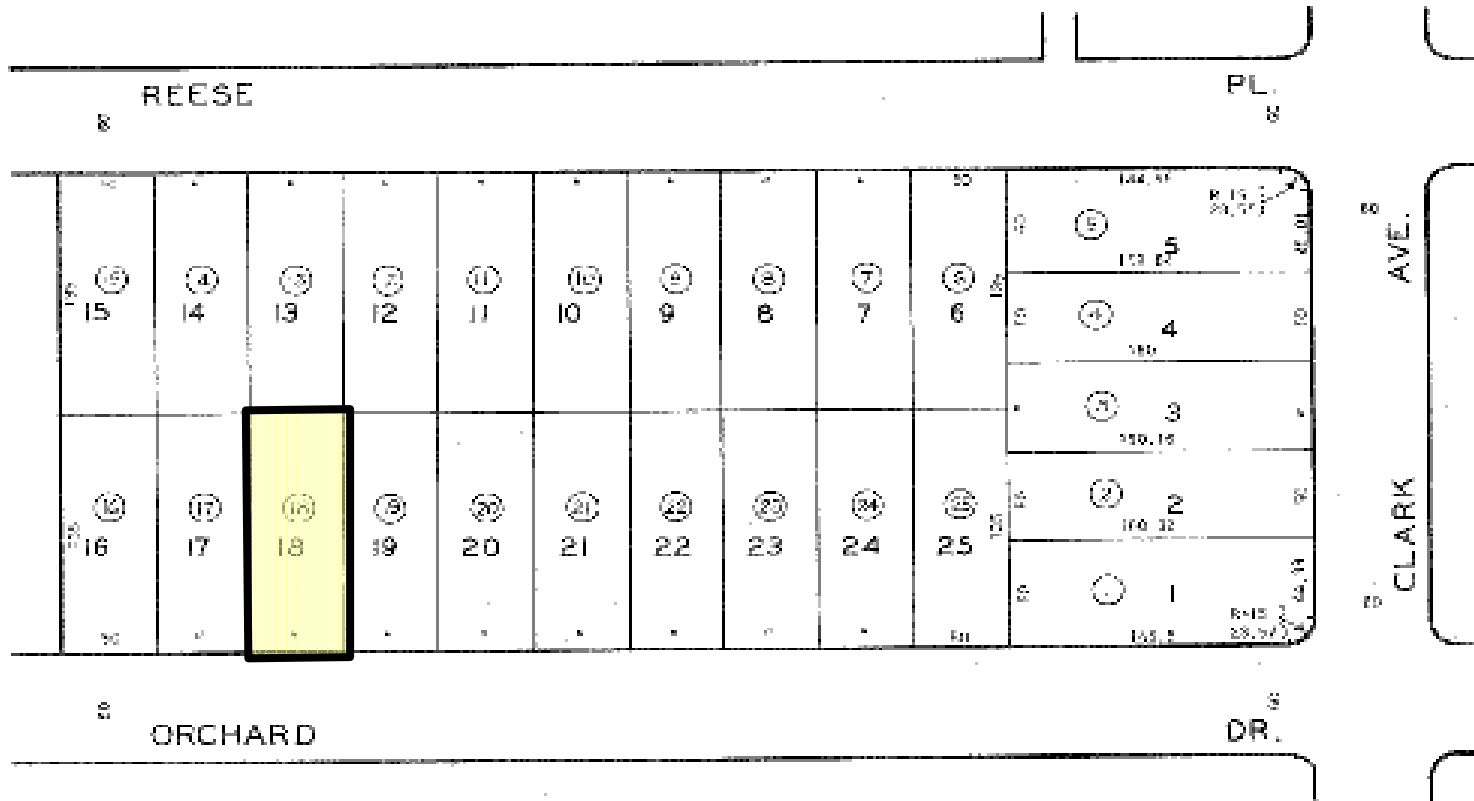
MICHAEL PESCI & JAMES ANTONUCCI
VP OF INVESTMENTS & VP OF INVESTMENTS
DRE # 01274379 & DRE # 01822661
(818) 432-1627 & (818) 432-1513



PARCEL MAP

2447 16

SCALE 1" = 80'



CODE 2500

TRACT NO. 9416
M.B. 135-99-100

FOR FEEL. ASMT. SEE 1973 0

EXEMPTED FROM
COUNTY OF LOS ANGELES, CALIF.

MICHAEL PESCI & JAMES ANTONUCCI

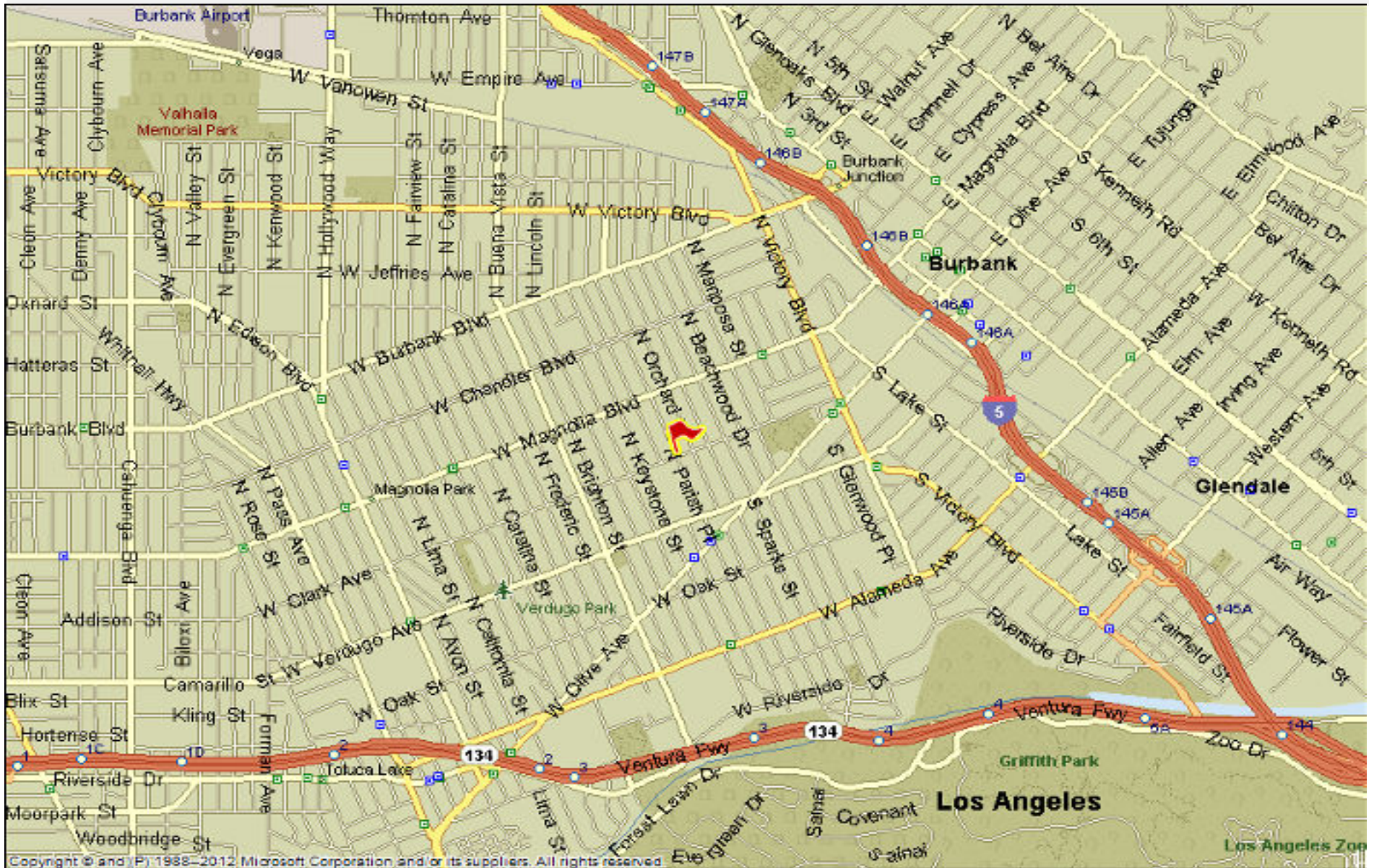
VP OF INVESTMENTS & VP OF INVESTMENTS

DRE # 01274379 & DRE # 01822661

(818) 432-1627 & (818) 432-1513



STREET MAP



MICHAEL PESCI & JAMES ANTONUCCI

VP OF INVESTMENTS & VP OF INVESTMENTS

DRE # 01274379 & DRE # 01822661

(818) 432-1627 & (818) 432-1513

aplaGROUP