

7131 Wall St

YUCCA VALLEY, CA



PRICE:

\$200,000

INVESTMENT HIGHLIGHTS:

- Great Yucca Valley Location
- APN: 0594-041-05
- Large Lot Approximately 130,680 Sq. Ft.
- Zoned for Commercial / Industrial Use

apla GROUP

KW COMMERCIAL
12001 VENTURA BLVD
SUITE #404
STUDIO CITY, CA 91604

PRESENTED BY:

MICHAEL PESCI
VP OF INVESTMENTS
BRE # 01274379
(818) 432-1627
MIKE@APLAGROUP.COM

JAMES ANTONUCCI
VP OF INVESTMENTS
BRE # 01822661
(818) 432-1513
JAMES@APLAGROUP.COM

7131 WALL ST

AERIAL VIEW



MICHAEL PESCI & JAMES ANTONUCCI

VP OF INVESTMENTS & VP OF INVESTMENTS

BRE # 01274379 & BRE # 01822661

(818) 432-1627 & (818) 432-1513

apla GROUP

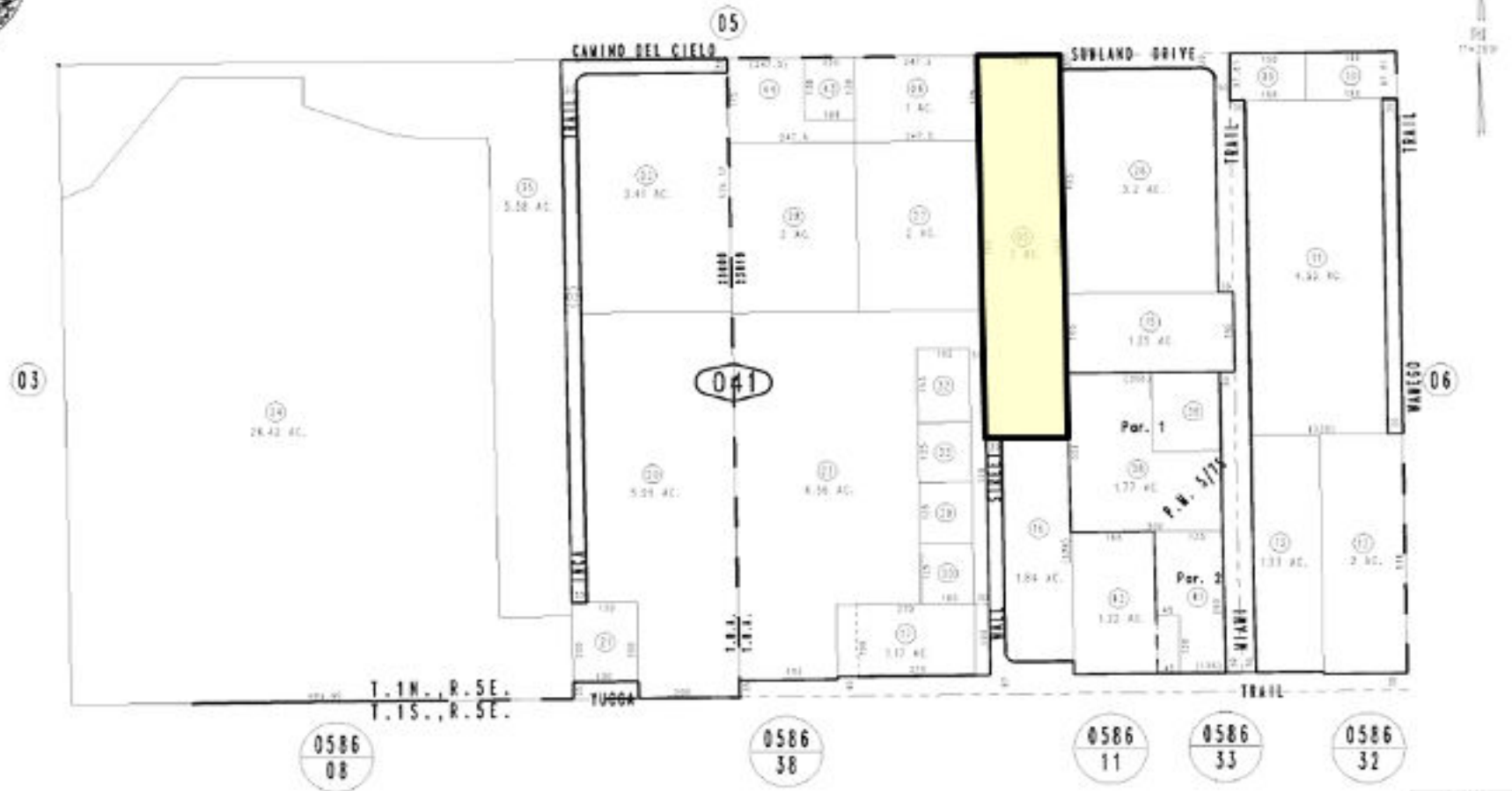
7131 WALL ST

PARCEL MAP

THIS MAP IS FOR THE PURPOSE
OF AD VALOREM TAXATION ONLY.

S.1/2, S.W.1/4 Sec.34, T.1N., R.5E., S.B.B.&M.

Town of Yucca Valley 0594 - 04
Tax Rate Area
23000 23019



March 2005

Parcel Map No. 599, P.M. 5175

Assessor's Map
Book 0594 Page 04
San Bernardino County

REARER
12/25/12 RW
03/13/13 GR
04/17/13 BR-AC

MICHAEL PESCI & JAMES ANTONUCCI

VP OF INVESTMENTS & VP OF INVESTMENTS

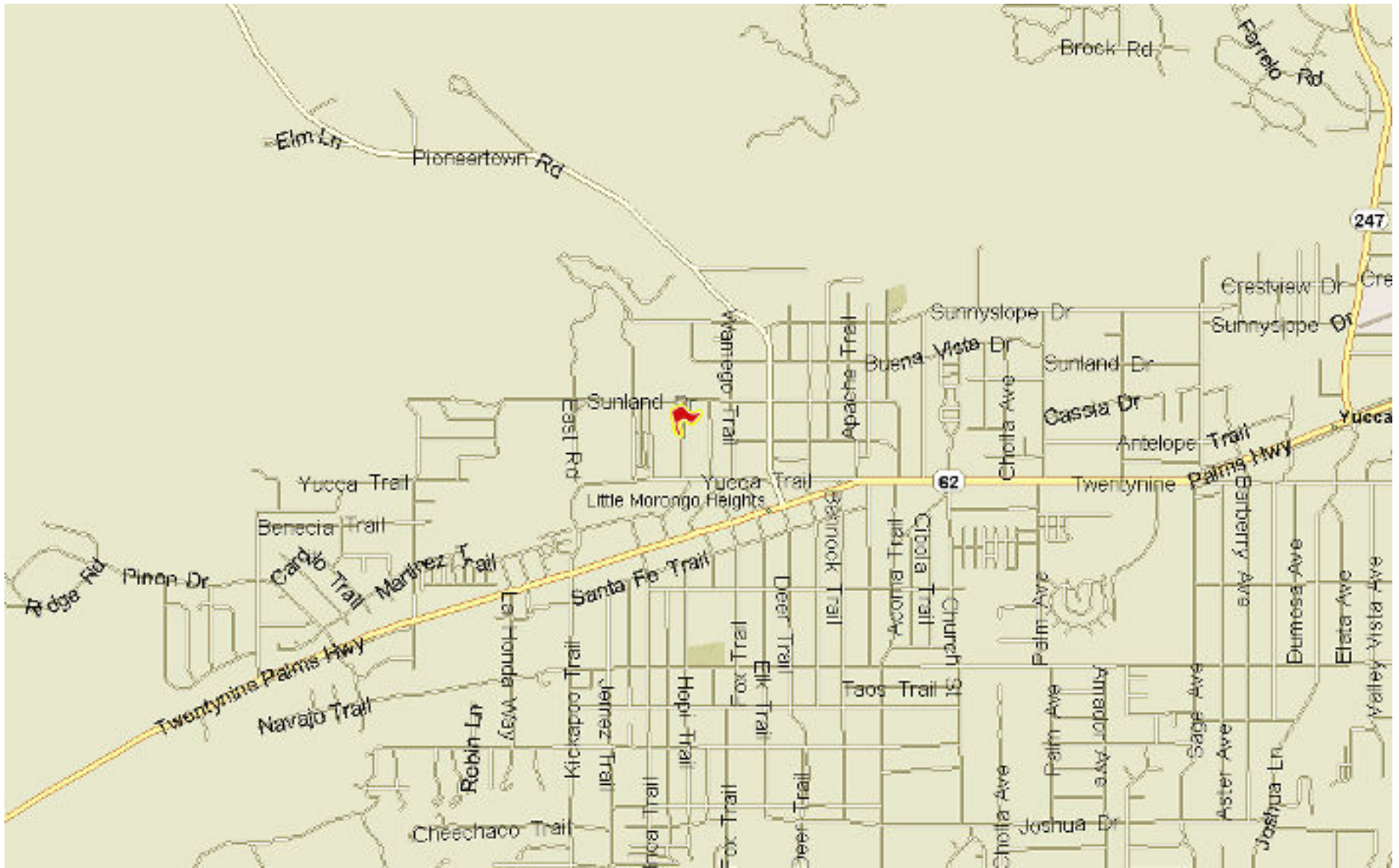
BRE # 01274379 & BRE # 01822661

(818) 432-1627 & (818) 432-1513



7131 WALL ST

STREET MAP



MICHAEL PESCI & JAMES ANTONUCCI

VP OF INVESTMENTS & VP OF INVESTMENTS

BRE # 01274379 & BRE # 01822661

(818) 432-1627 & (818) 432-1513

