

# 8144 Sepulveda Pl

PANORAMA CITY, CA



## PRICE:

CALL FOR PRICE

## INVESTMENT HIGHLIGHTS:

- Great Panorama City Location
- High Demand Rental Location
- Copper Plumbing
- Unit Mix: 6-2+1
- Lack of Inventory on Market
- On-Site Laundry
- Individually Metered for Gas & Electric
- Secure Entry & Parking

**apla** GROUP

### KW COMMERCIAL

12001 VENTURA PLACE  
SUITE #404  
STUDIO CITY, CA 91604

### PRESENTED BY:

#### MICHAEL PESCI

VP OF INVESTMENTS  
BRE # 01274379  
(818) 432-1627  
MIKE@APLAGROUP.COM

#### JAMES ANTONUCCI

VP OF INVESTMENTS  
BRE # 01822661  
(818) 432-1513  
JAMES@APLAGROUP.COM

6 UNITS ON SEPULVEDA PL

PHOTOS



**MICHAEL PESCI & JAMES ANTONUCCI**

VP OF INVESTMENTS & VP OF INVESTMENTS

BRE # 01274379 & BRE # 01822661

(818) 432-1627 & (818) 432-1513

**apla** GROUP

6 UNITS ON SEPULVEDA PL

PHOTOS



**MICHAEL PESCI & JAMES ANTONUCCI**

VP OF INVESTMENTS & VP OF INVESTMENTS

BRE # 01274379 & BRE # 01822661

(818) 432-1627 & (818) 432-1513

**apla** GROUP

6 UNITS ON SEPULVEDA PL

PHOTOS



**MICHAEL PESCI & JAMES ANTONUCCI**

VP OF INVESTMENTS & VP OF INVESTMENTS

BRE # 01274379 & BRE # 01822661

(818) 432-1627 & (818) 432-1513

**apla** GROUP

6 UNITS ON SEPULVEDA PL

PHOTOS



**MICHAEL PESCI & JAMES ANTONUCCI**

VP OF INVESTMENTS & VP OF INVESTMENTS

BRE # 01274379 & BRE # 01822661

(818) 432-1627 & (818) 432-1513

**apla** GROUP

6 UNITS ON SEPULVEDA PL

PHOTOS



**MICHAEL PESCI & JAMES ANTONUCCI**

VP OF INVESTMENTS & VP OF INVESTMENTS

BRE # 01274379 & BRE # 01822661

(818) 432-1627 & (818) 432-1513

**apla** GROUP

6 UNITS ON SEPULVEDA PL

PHOTOS



**MICHAEL PESCI & JAMES ANTONUCCI**

VP OF INVESTMENTS & VP OF INVESTMENTS

BRE # 01274379 & BRE # 01822661

(818) 432-1627 & (818) 432-1513

**apla** GROUP

6 UNITS ON SEPULVEDA PL

AERIAL VIEW



**MICHAEL PESCI & JAMES ANTONUCCI**

VP OF INVESTMENTS & VP OF INVESTMENTS

BRE # 01274379 & BRE # 01822661

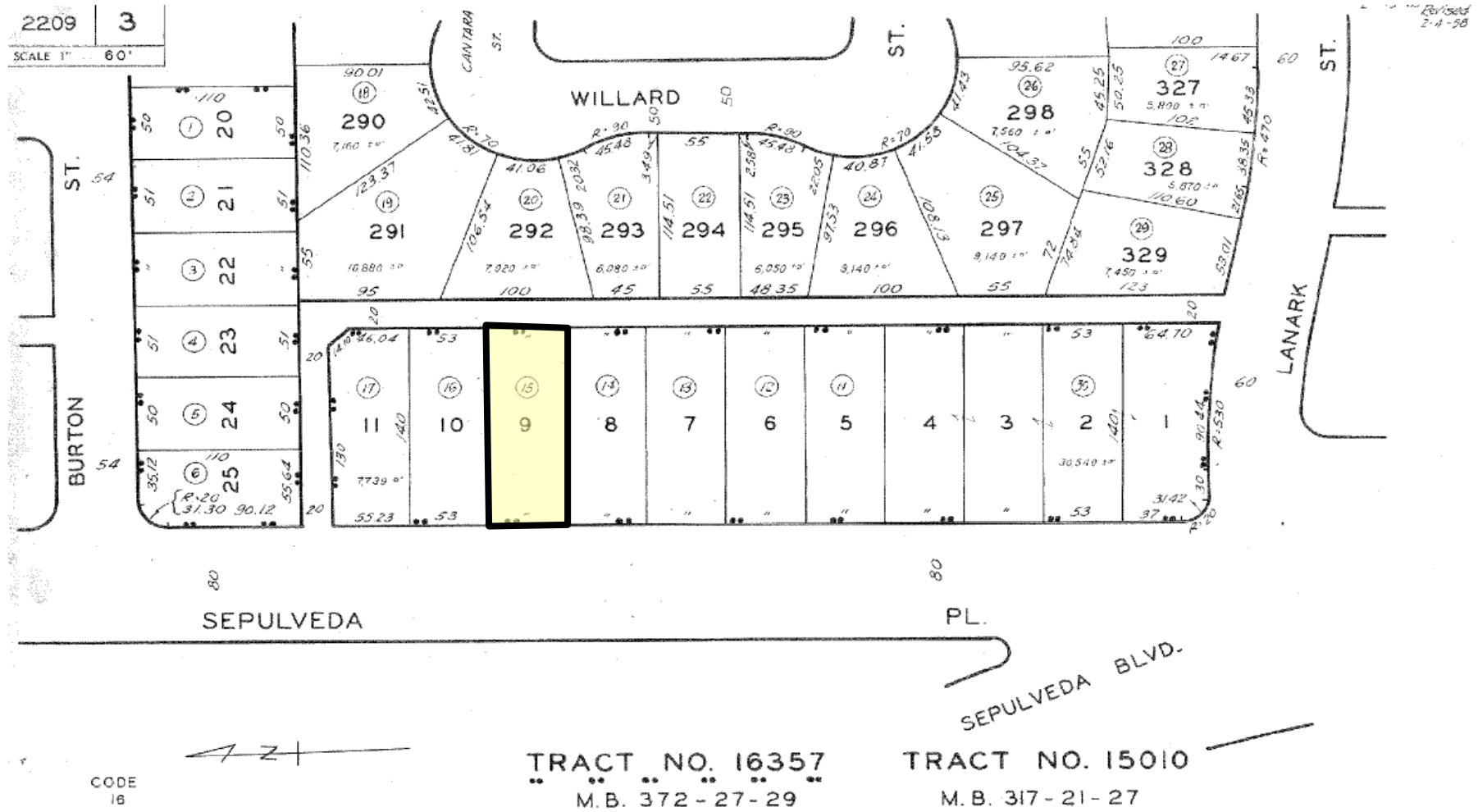
(818) 432-1627 & (818) 432-1513

**apla** GROUP



6 UNITS ON SEPULVEDA PL

PARCEL MAP

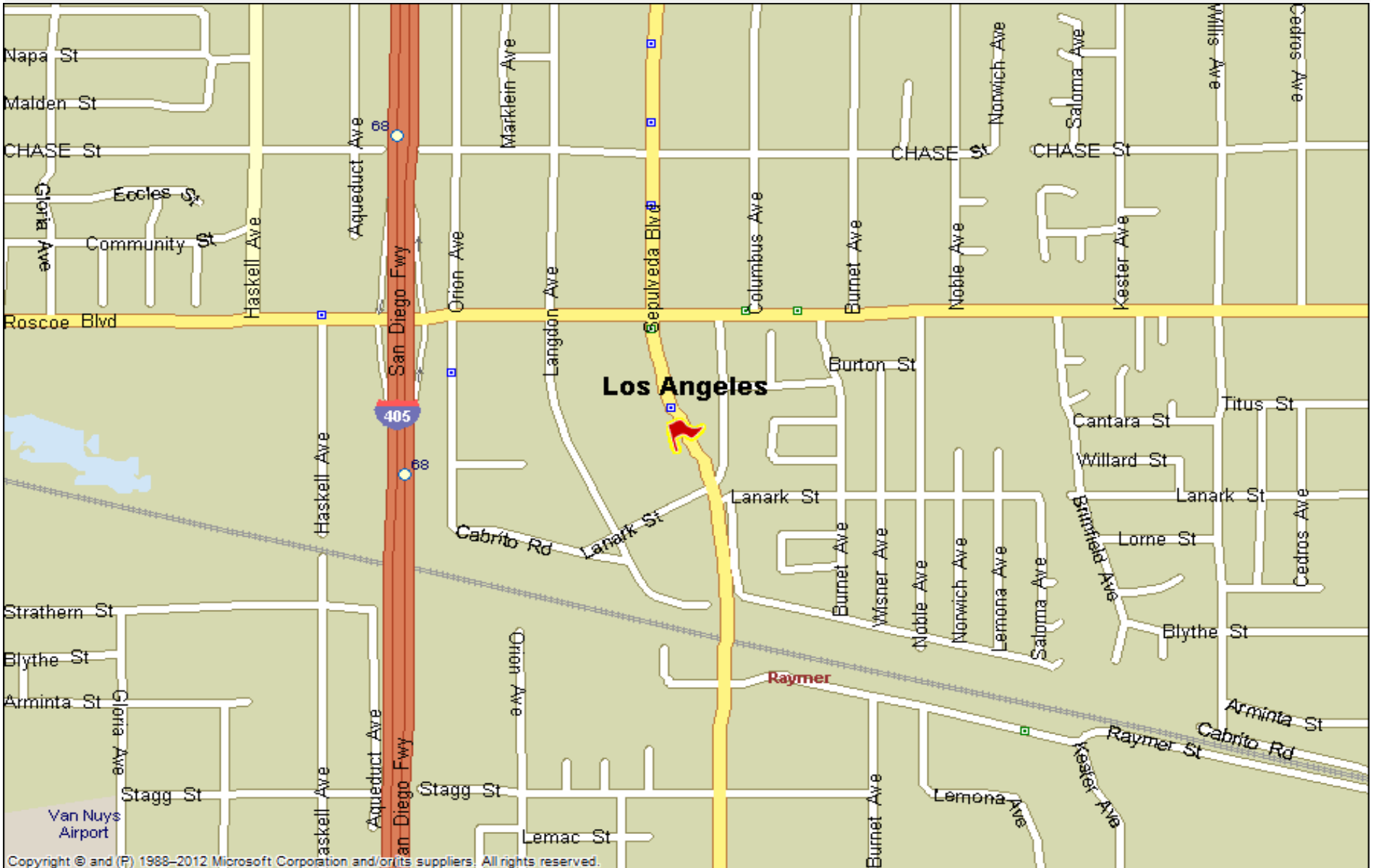


**MICHAEL PESCI & JAMES ANTONUCCI**  
 VP OF INVESTMENTS & VP OF INVESTMENTS  
 BRE # 01274379 & BRE # 01822661  
 (818) 432-1627 & (818) 432-1513



6 UNITS ON SEPULVEDA PL

STREET MAP



MICHAEL PESCI & JAMES ANTONUCCI

VP OF INVESTMENTS & VP OF INVESTMENTS

BRE # 01274379 & BRE # 01822661

(818) 432-1627 & (818) 432-1513



# 6 UNITS ON SEPULVEDA PL

## STREET MAP



MICHAEL PESCI & JAMES ANTONUCCI

VP OF INVESTMENTS & VP OF INVESTMENTS

BRE # 01274379 & BRE # 01822661

(818) 432-1627 & (818) 432-1513

