

EXCLUSIVELY LISTED BY APLA GROUP

218 E 27th Street

LOS ANGELES, CA



PRICE:

CALL FOR PRICE

INVESTMENT HIGHLIGHTS:

- Tremendous Rental Upside
- Gated/Secure Entry
- LA Memorial Coliseum Nearby
- Unit Mix: 5-1+1 | 1-2+1
- Great Los Angeles Location
- University of Southern California Nearby
- Individually Metered for Gas & Electric
- Short Distance To I-110 & I-10 Freeway

apla GROUP

KW COMMERCIAL

4605 LANKERSHIM BLVD
SUITE #635
TOLUCA LAKE, CA 91602

PRESENTED BY:

MICHAEL PESCI

VP OF INVESTMENTS
BRE # 01274379
(818) 432-1627
MIKE@APLAGROUP.COM

JAMES ANTONUCCI

VP OF INVESTMENTS
BRE # 01822661
(818) 432-1513
JAMES@APLAGROUP.COM

6 UNITS ON EAST 27TH STREET

RENT ROLL

UNIT #	NOTES	UNIT TYPE	SECURITY DEPOSIT	CURRENT RENT	MARKET RENT
218		2+1	\$750	\$1,294	\$2,125
219		1+1	\$500	\$1,024	\$1,750
220		1+1	\$1,075	\$1,118	\$1,750
221		1+1	\$875	\$1,066	\$1,750
222		1+1	\$300	\$970	\$1,750
223		1+1	\$775	\$1,063	\$1,750
TOTAL:			\$4,275	\$6,535	\$10,875

This information has been secured from sources we believe to be reliable, but we make no representations or warranties, expressed or implied as to the accuracy of the information. References to square footage or age are approximate. Buyer must verify the information and bears all risk for any inaccuracies.

MICHAEL PESCI & JAMES ANTONUCCI

VP OF INVESTMENTS & VP OF INVESTMENTS

BRE # 01274379 & BRE # 01822661

(818) 432-1627 & (818) 432-1513



6 UNITS ON EAST 27TH STREET

PHOTOS



MICHAEL PESCI & JAMES ANTONUCCI

VP OF INVESTMENTS & VP OF INVESTMENTS

BRE # 01274379 & BRE # 01822661

(818) 432-1627 & (818) 432-1513

apla GROUP

6 UNITS ON EAST 27TH STREET

PHOTOS



MICHAEL PESCI & JAMES ANTONUCCI

VP OF INVESTMENTS & VP OF INVESTMENTS

BRE # 01274379 & BRE # 01822661

(818) 432-1627 & (818) 432-1513

apla GROUP

6 UNITS ON EAST 27TH STREET

PHOTOS



MICHAEL PESCI & JAMES ANTONUCCI

VP OF INVESTMENTS & VP OF INVESTMENTS

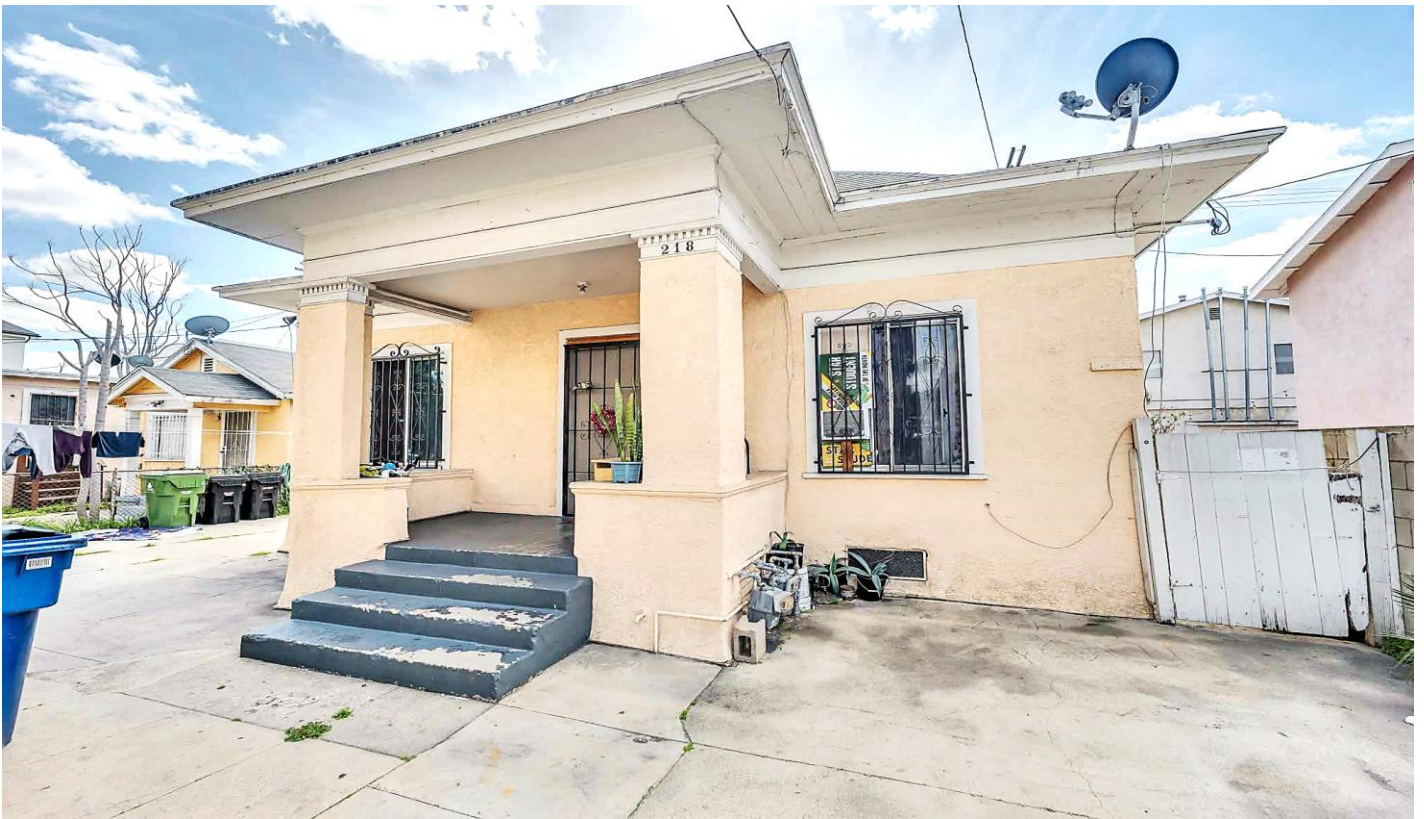
BRE # 01274379 & BRE # 01822661

(818) 432-1627 & (818) 432-1513

apla GROUP

6 UNITS ON EAST 27TH STREET

PHOTOS



MICHAEL PESCI & JAMES ANTONUCCI

VP OF INVESTMENTS & VP OF INVESTMENTS

BRE # 01274379 & BRE # 01822661

(818) 432-1627 & (818) 432-1513

apla GROUP

6 UNITS ON EAST 27TH STREET

PHOTOS



MICHAEL PESCI & JAMES ANTONUCCI

VP OF INVESTMENTS & VP OF INVESTMENTS

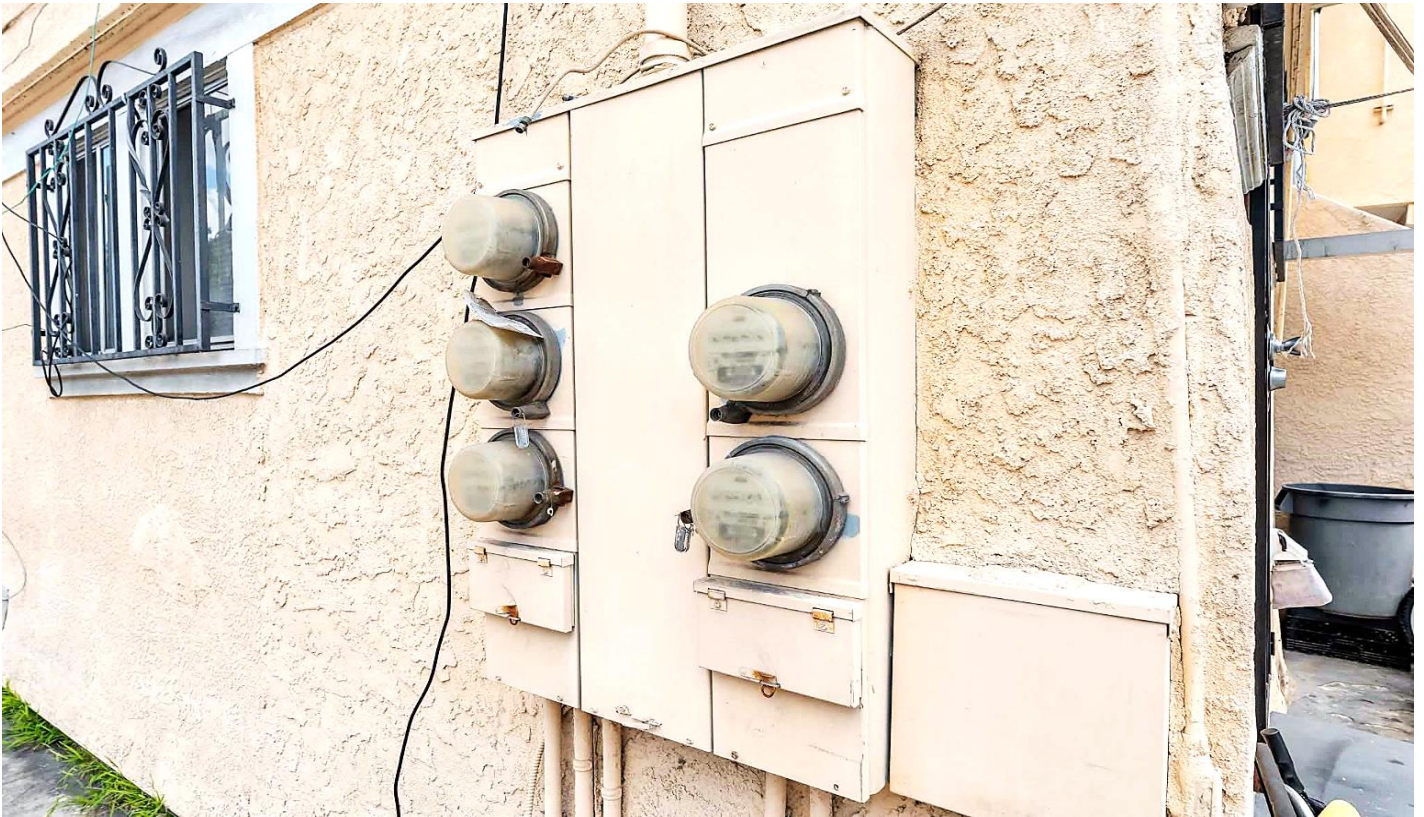
BRE # 01274379 & BRE # 01822661

(818) 432-1627 & (818) 432-1513

apla GROUP

6 UNITS ON EAST 27TH STREET

PHOTOS



MICHAEL PESCI & JAMES ANTONUCCI

VP OF INVESTMENTS & VP OF INVESTMENTS

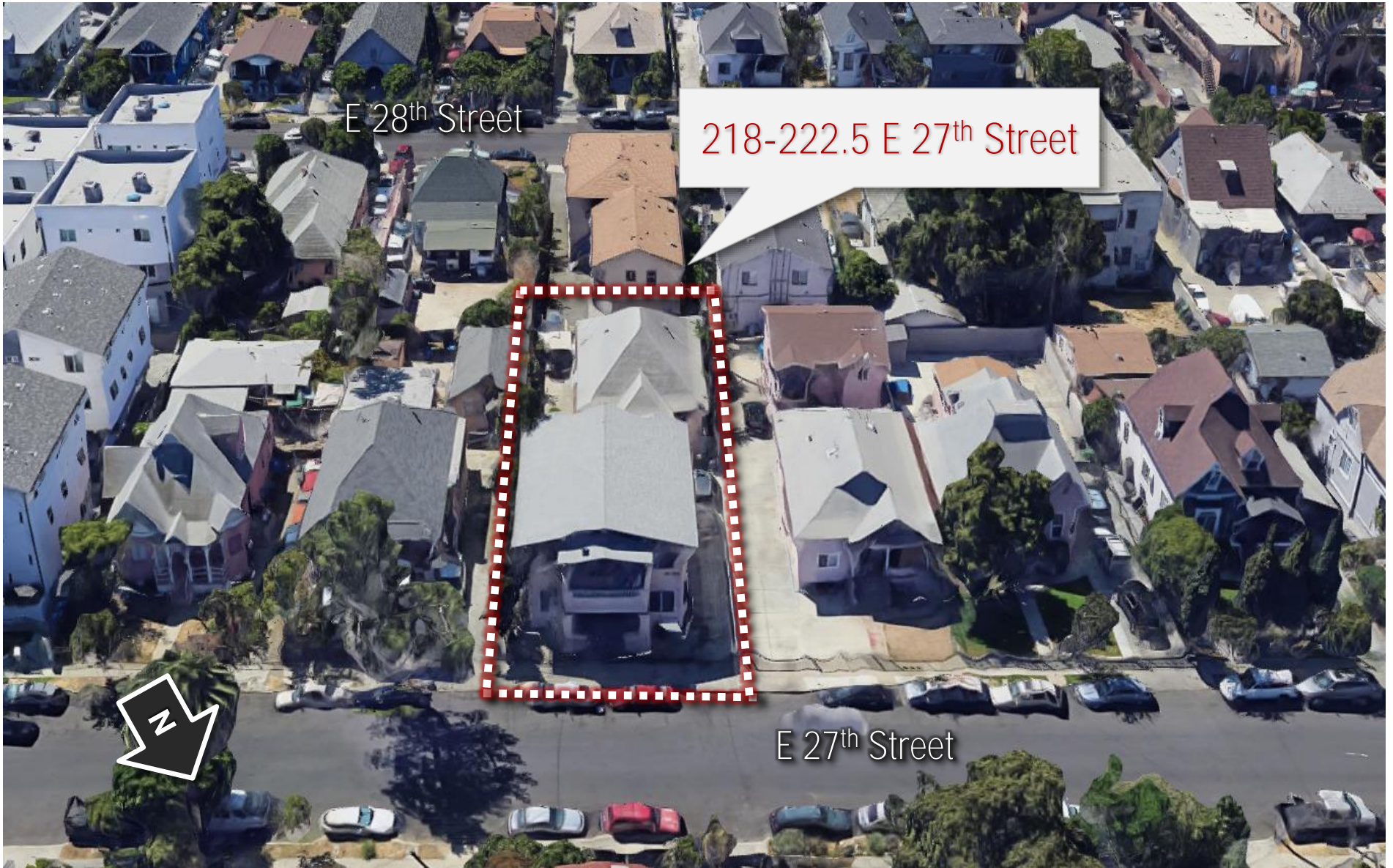
BRE # 01274379 & BRE # 01822661

(818) 432-1627 & (818) 432-1513

apla GROUP

6 UNITS ON EAST 27TH STREET

AERIAL VIEW



MICHAEL PESCI & JAMES ANTONUCCI

VP OF INVESTMENTS & VP OF INVESTMENTS

BRE # 01274379 & BRE # 01822661

(818) 432-1627 & (818) 432-1513

apla GROUP

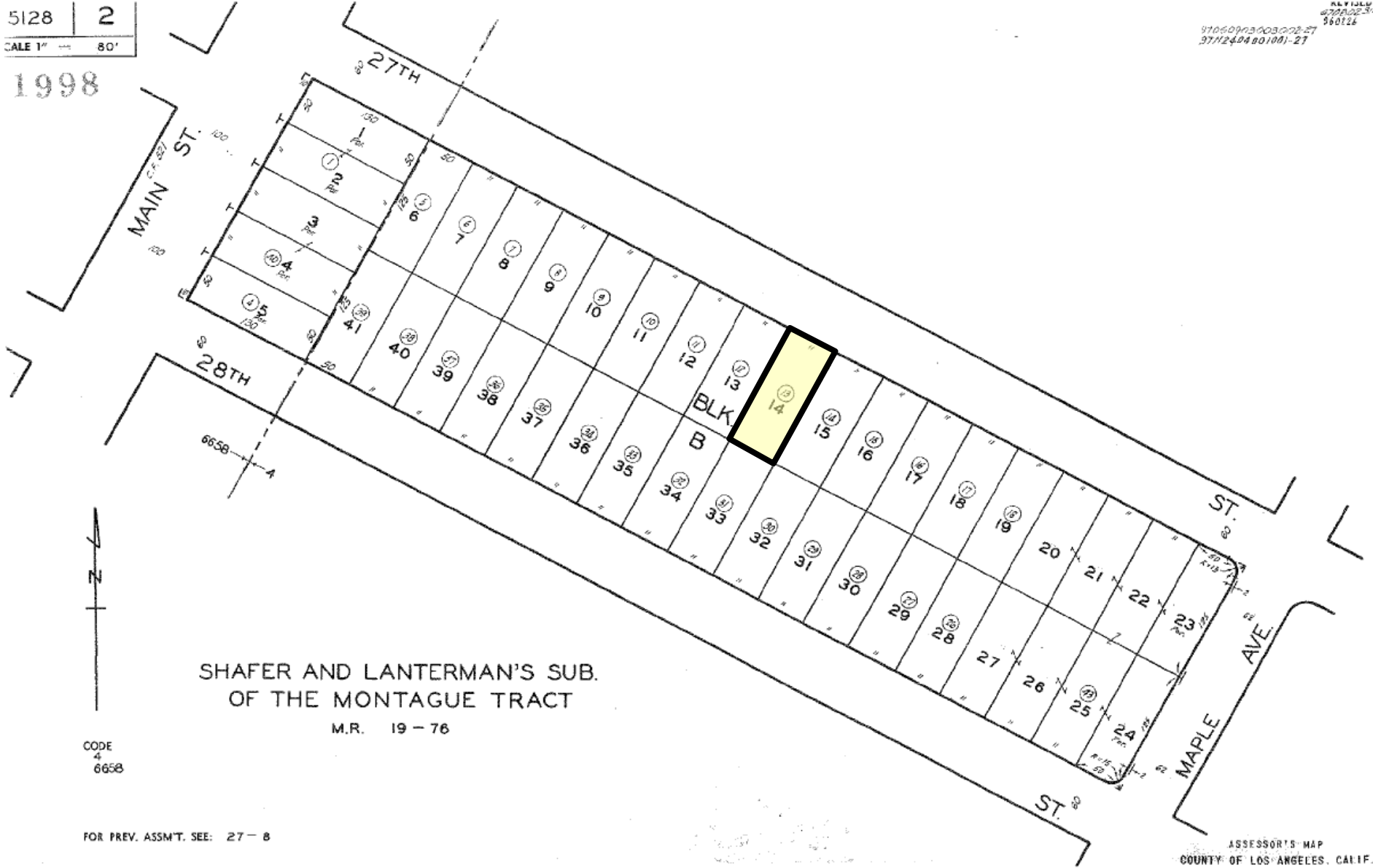
6 UNITS ON EAST 27TH STREET

PARCEL MAP

5128 | 2
SCALE 1" = 80'

1998

REVIEW
DATE 3/6
560126
37060903003002-27
371240480101-27



MICHAEL PESCI & JAMES ANTONUCCI

VP OF INVESTMENTS & VP OF INVESTMENTS

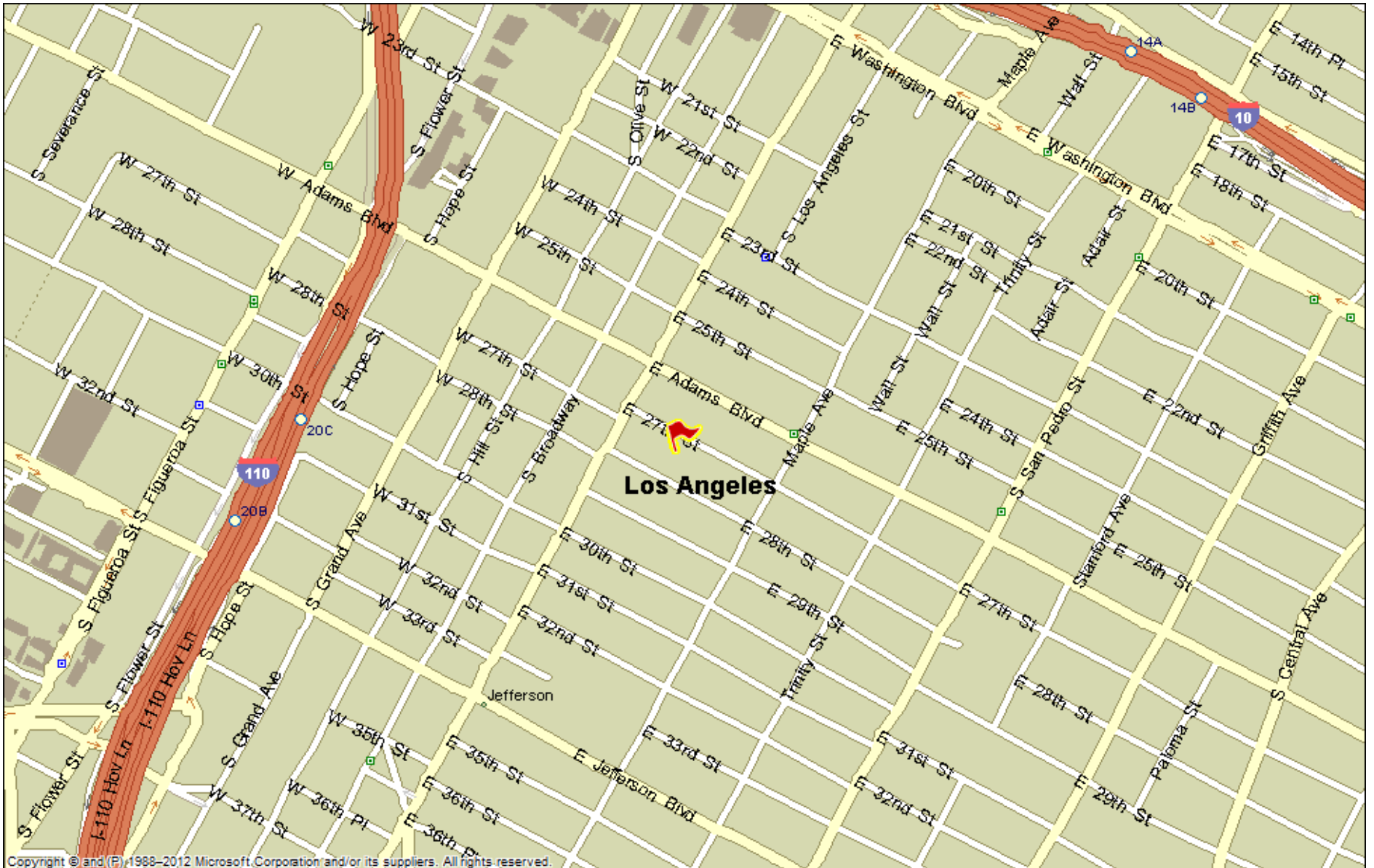
BRE # 01274379 & BRE # 01822661

(818) 432-1627 & (818) 432-1513



6 UNITS ON EAST 27TH STREET

STREET MAP



Copyright © and (P) 1988–2012 Microsoft Corporation and/or its suppliers. All rights reserved.

MICHAEL PESCI & JAMES ANTONUCCI

VP OF INVESTMENTS & VP OF INVESTMENTS

BRE # 01274379 & BRE # 01822661

(818) 432-1627 & (818) 432-1513



6 UNITS ON EAST 27TH STREET

AMENITY MAP



MICHAEL PESCI & JAMES ANTONUCCI

VP OF INVESTMENTS & VP OF INVESTMENTS

BRE # 01274379 & BRE # 01822661

(818) 432-1627 & (818) 432-1513

